

Temple Land Use Committee

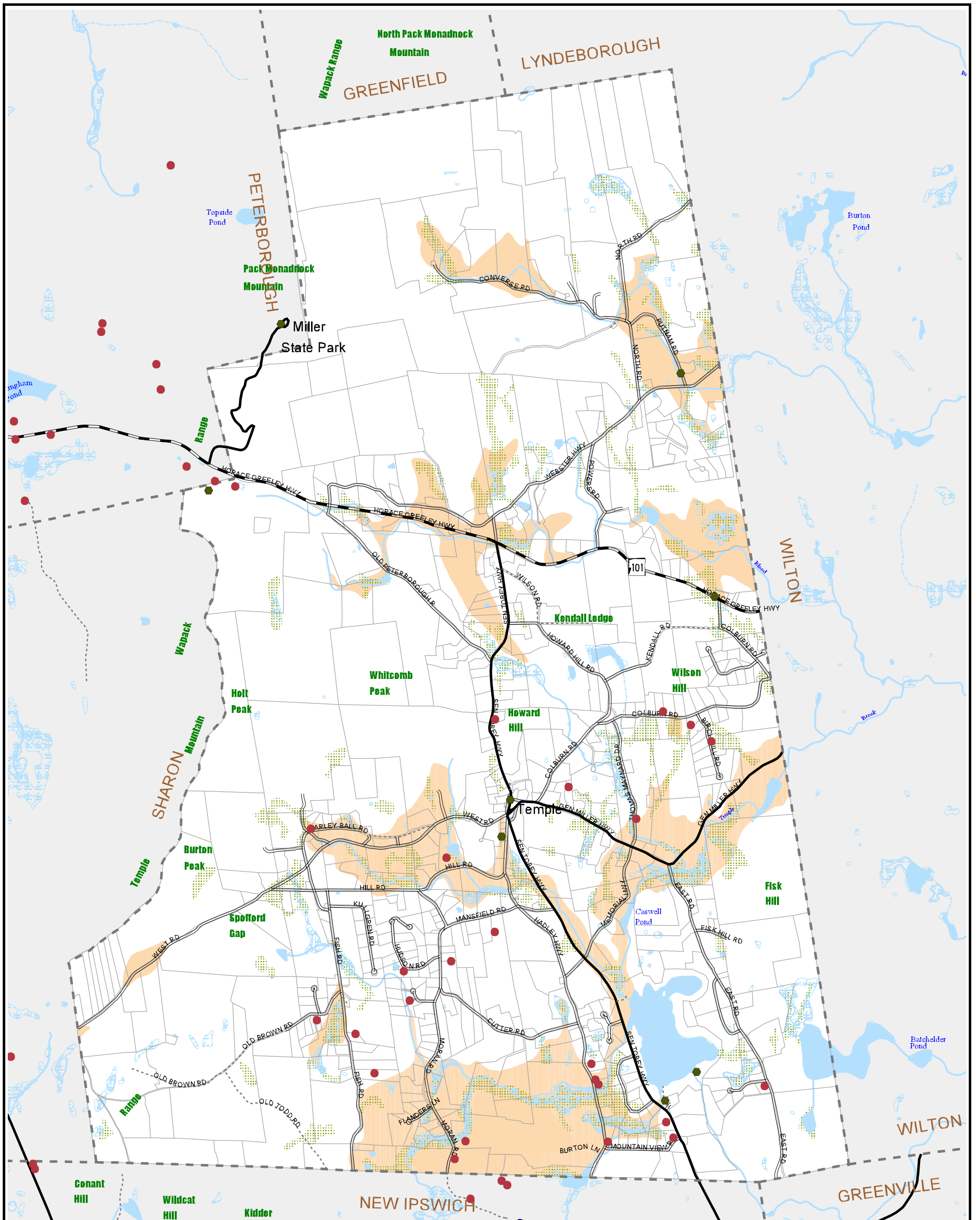
Saturday June 6, 2020

Agenda

Meeting 9:00 AM (Meet at Municipal Building)

1. Call meeting to order. Roll call.
2. Review prior meeting minutes.
3. Discuss plan for visiting sites for the day
4. Visit sites: discuss history of sites, present use and future use
 - a. Holt land
 - b. Skladany land
5. Meeting should take approximately 2 hours. We will be outside so please plan accordingly:
bug spray, water, bug nets, etc.
6. Please remember, we are still social distancing and wearing masks if desired.
7. Plan next meeting date/time/location.
8. Adjourn

Timothy Fiske, Committee Chairman



Town of Temple, NH

Aquifers, Hydric Soils, & Wetlands

- Stratified-Drift Aquifer
- Hydric Soil
- Waterbodies
- Wetlands*
- Watercourses
- Municipal Boundaries
- Property Lines

- Private Wells Since 1984
- Public Water Supply
- Wellhead Protection Area

- DOT Road Classes
- Class I
 - Class II
 - Class V
 - Class VI

* USFWS National Wetlands Inventory & USGS Data

Map Prepared By **SWRPC** January 2003

20 Central Square, 2nd Floor
Keene, New Hampshire 03431
(603) 357-0557
fax: (603) 357-7440
<http://www.swrpc.org/>
email: admin@swrpc.org

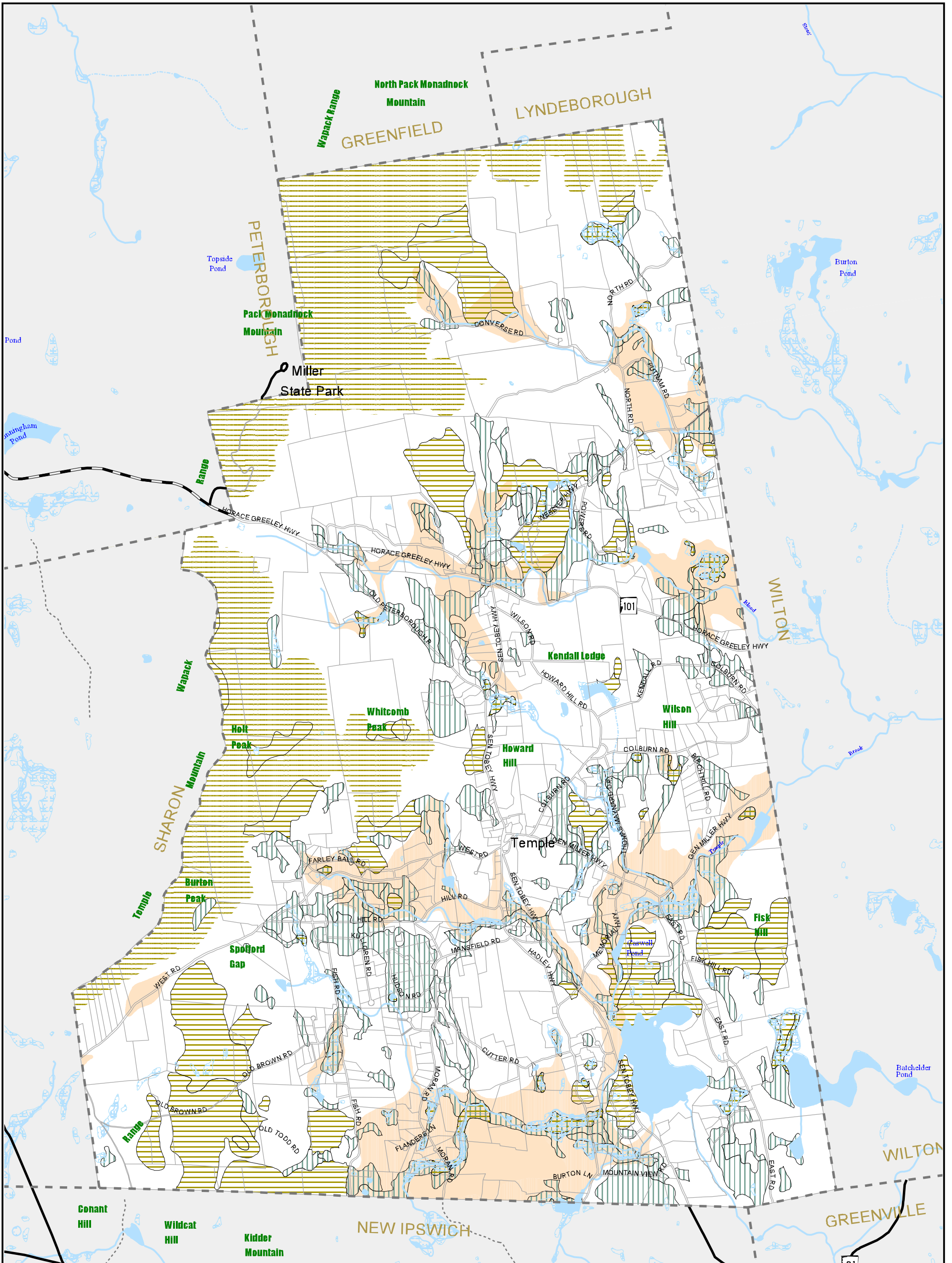
Digital base information provided by the New Hampshire Geographical Referenced Analysis and Information Transfer System (GRANT)

Y:\projects\temple\master plan\aquifers, hydricsoils, wetlands.apr

Scale = 1:36,000

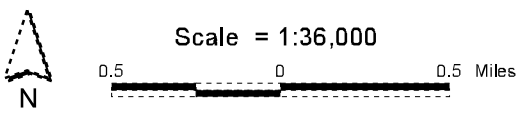
0.5 0 0.5 Miles

Map Not Intended For Site Specific Work



Town of Temple, NH

Development Constraints



Map Not Intended For Site Specific Work

DOT Road Classes

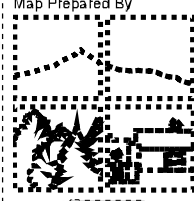
- Class I
- Class II
- Class V
- Class VI

- Shallow to Bedrock (< 40')
- Shallow to Water Table (< 1.5')
- Waterbodies
- Wetlands*
- Watercourses
- Municipal Boundaries
- Property Lines


* USFWS National Wetlands Inventory & USGS Data

December 2003

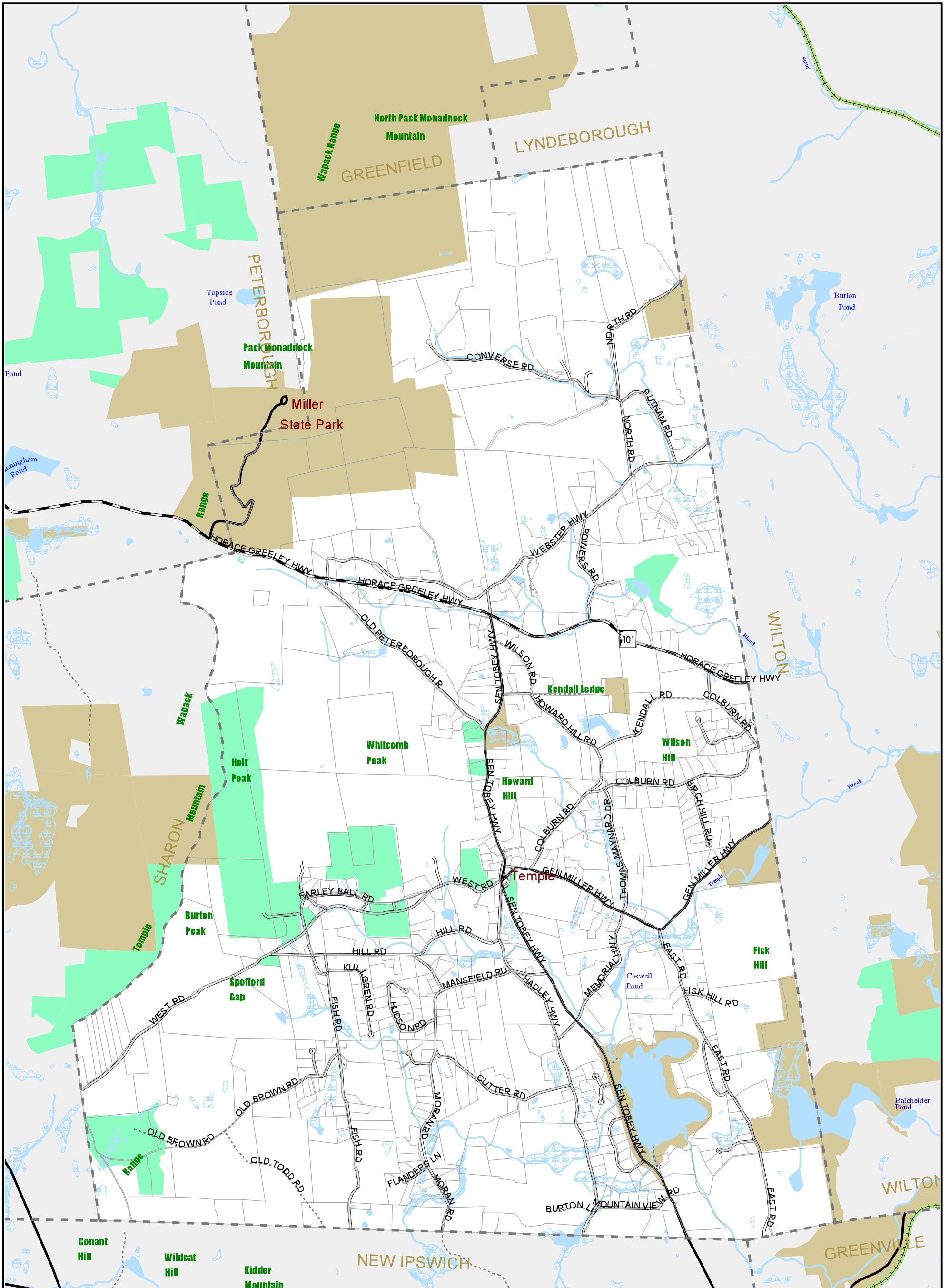
Map Prepared By



SWRPC
 20 Central Square, 2nd Floor
 Keene, New Hampshire 03431
 (603) 357-0557
 fax: (603) 357-7440
<http://www.swrpc.org/>
 email: admin@swrpc.org

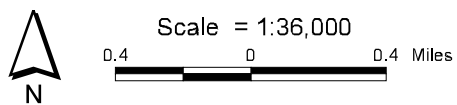
 Digital base information provided by the New Hampshire Geographically Referenced Analysis and Information Transfer System (GRANT)
















Y:\projects\temple\master plan\devconstraints.apr



Town of Temple, NH


Conservation Lands/Easements




- | | |
|---|--|
|  Fee Ownership - Protected |  DOT Road Classes |
|  Conservation Easement |  Class I |
|  Waterbodies |  Class II |
|  Wetlands* |  Class III |
|  Watercourses |  Class IV |
|  Municipal Boundaries |  Class V |
|  Property Lines |  Class VI |
|  Railroad/Railbed | |

* USFWS National Wetlands Inventory & USGS Data

Map Prepared By



SWRPC
 20 Central Square, 2nd Floor
 Keene, New Hampshire 03431
 (603) 357-0557
 fax: (603) 357-7440
<http://www.swrpc.org/>
 email: admin@swrpc.org

 Digital base information provided by the New Hampshire Geographic Information System (GRANT)