



Parking and Safety Forum

—
March 30, 2023

photo by Scott Hecker

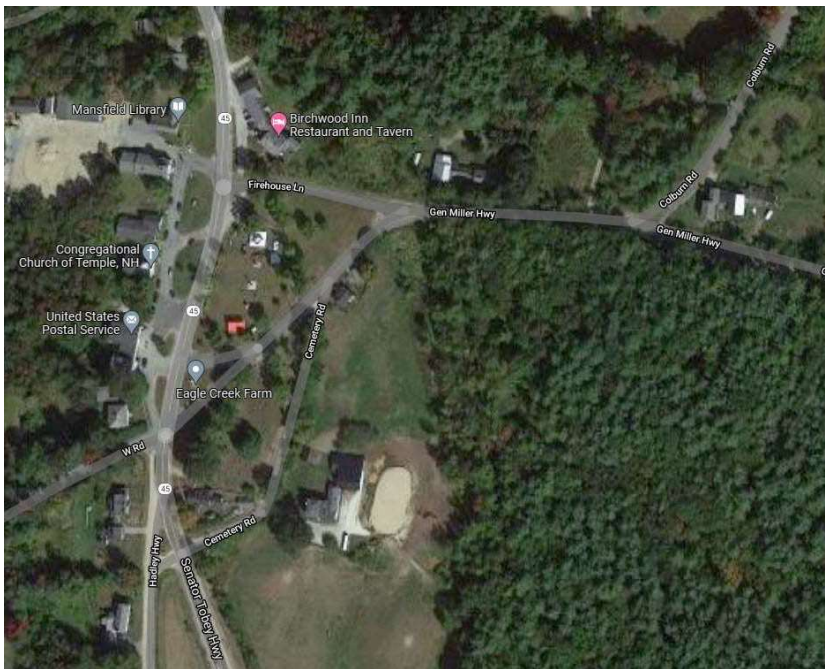
Why Plan NH Came to Temple...

- Town of Temple CAC Submitted Application in April 2022
- Three Areas of Opportunity/Focus
 - Addressing the parking challenges in the village center and enhancing the usability of the area for community gatherings, civic engagement, historic preservation, and economic development. This includes a recommendation on the optimum location for our Town Highway Department facilities, based on residents' desires for the village center.
 - Re-imagining the town properties in the focus areas, with sustainable recreational and social opportunities that will invite all residents to gather and participate in community life.
 - Creating an affordable housing neighborhood with agriculture and sustainability in mind, that will encourage diverse multi-generational housing options. The town is seeking creative zoning development incentives to present to town residents.

Why Plan NH Came to Temple...

- Town of Temple CAC Submitted Application in April 2022
- Three Areas of Opportunity/Focus
 - **Addressing the parking challenges in the village center and enhancing the usability of the area for community gatherings, civic engagement, historic preservation, and economic development. This includes a recommendation on the optimum location for our Town Highway Department facilities, based on residents' desires for the village center.**
 - Re-imagining the town properties in the focus areas, with sustainable recreational and social opportunities that will invite all residents to gather and participate in community life.
 - Creating an affordable housing neighborhood with agriculture and sustainability in mind, that will encourage diverse multi-generational housing options. The town is seeking creative zoning development incentives to present to town residents.

What Plan NH Heard



- Vibrant downtown with different community events
- Birchwood Inn is doing well
- Active, quaint, charming, historic, small-town feel
- Parking concerns in the Village District. People don't know where to park - would like to see improved options
- Safety concerns for pedestrians, vehicle speed
- Little to no lighting – needs to be improved
- Explore opportunities to improve traffic flow and circulation
- Mixed opinions regarding the potential relocation of the DPW shed
- Preserve the aesthetic of the downtown and do not eliminate green space
- Some residents do not want any changes – it's perfect as it is!
- Parking up on the common during community events
- Emergency access is nearly impossible during a snow event
- Downtown is not pedestrian friendly with no sidewalks
- Could we make Firehouse Lane one-way? That could alleviate flow issues
- Widening Main Street could help emergency & pedestrian access
- Figure out ways to slow down traffic coming into Town Center

Charrette Report

The first project area in the Temple charrette is the most widely debated, and that's the Village Center, as outlined in red. This area includes the library, Town Hall, the highway department and the adjacent areas that would be impacted by changes. Since the ideas we heard from both the Town residents and the stakeholders, our team developed a variety of options ranging from the "do-nothing" option to dramatically changing the layout of the area, with everything in between.



Top Opportunities for the Village Center

Parking

Reorganization of parking needs



Traffic Calming

Complete Streets Design to help promote traffic calming and multimodal mobility (Consistent with the Master Plan)



Lighting

Increasing visibility and safety with lighting options





photo by Gretchen Whitcomb

Master Plan - Vision Statement

"Temple should have a sense of community that is the core of its rural character. The village should be retained as the center of the town's social, political, and cultural life. The town common, historic buildings, monuments, and cemeteries should be preserved for future generations."



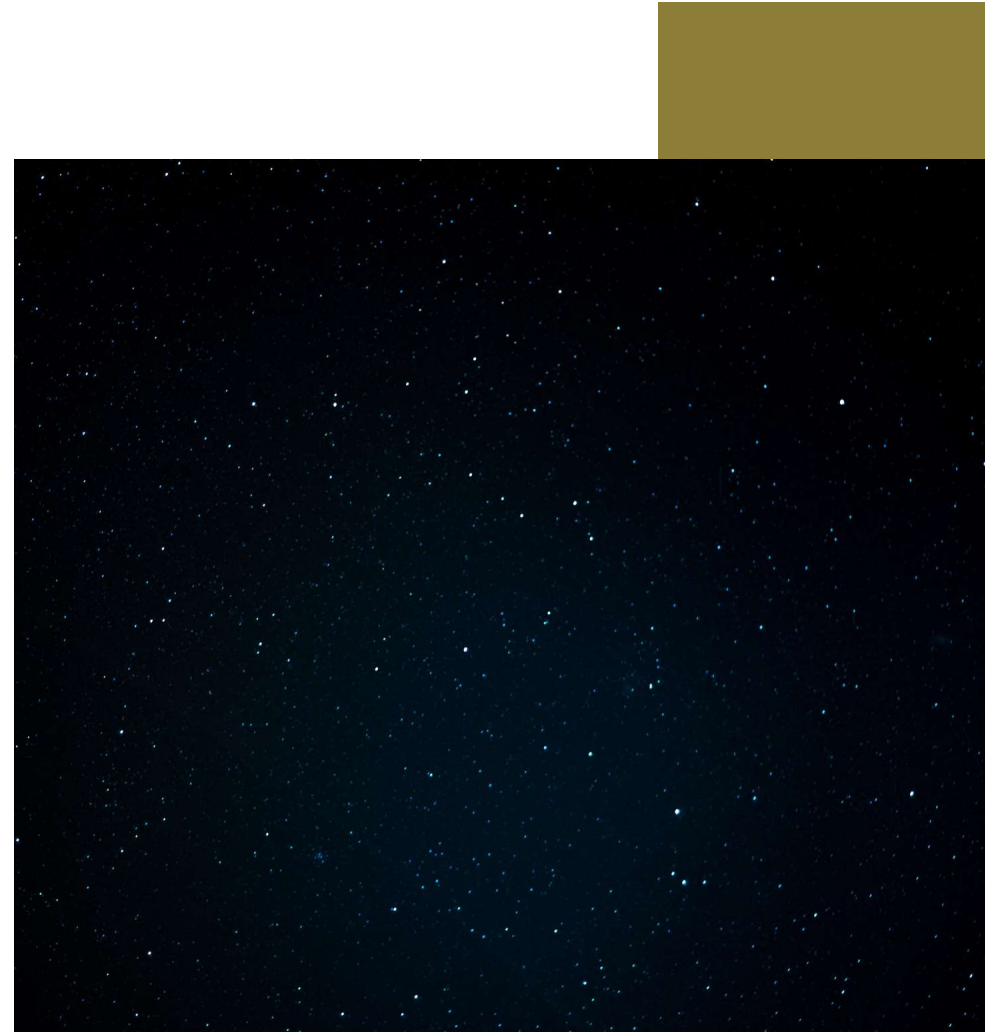
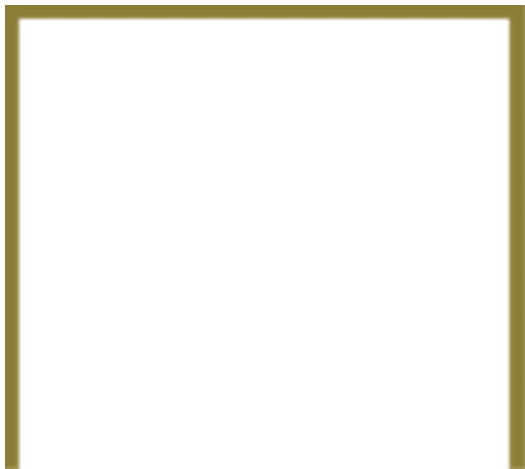
Increase Visibility with Lighting Options

No additional information is available in the
Charrette report.

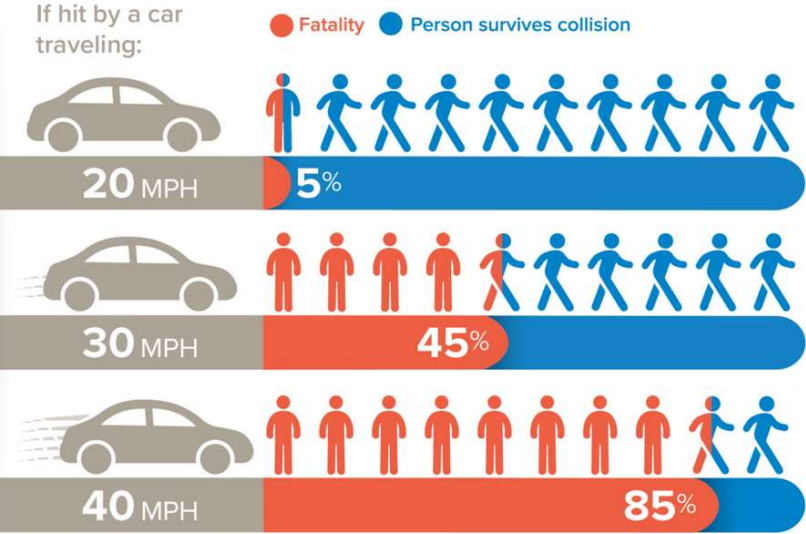
Section 30 Lighting/Dark SkyProtection

VI. PUBLIC AREA AND ROADWAY LIGHTING

Installation of any new public area or roadway lighting fixtures other than for traffic control shall be permitted only by decision of the planning board, following a duly noticed public hearing.

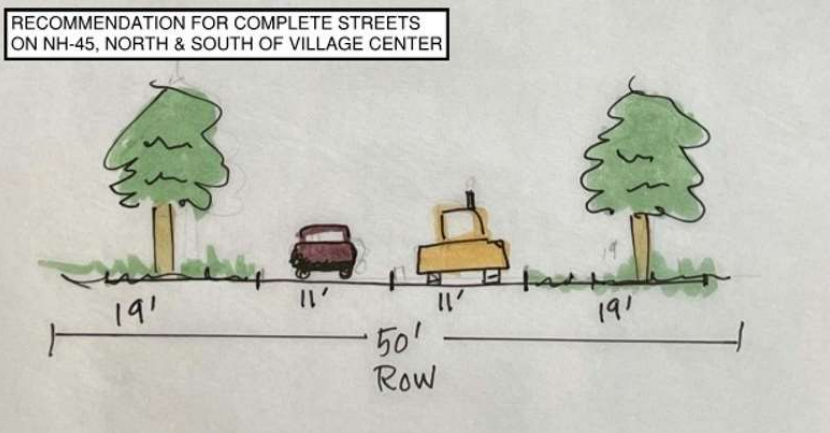


Traffic Calming & Complete Streets



National Traffic Safety Board (2017) Reducing Speeding-Related Crashes Involving Passenger Vehicles. Available from: <https://www.nts.gov/safety/safety-studies/Documents/SS1701.pdf>

Complete Streets is an **approach** to Planning, designing, building, operating, and maintaining streets that enables safe access for all people who need to use them, including pedestrians, bicyclists, motorists, and transit riders of all ages and abilities.



What Would Complete Streets Look Like?

Pursuing Complete Streets means first adopting a POLICY that defines Temple's approach. Once we have a Complete Streets Policy, there is grant money available for related projects.

Examples of what this would look like include:

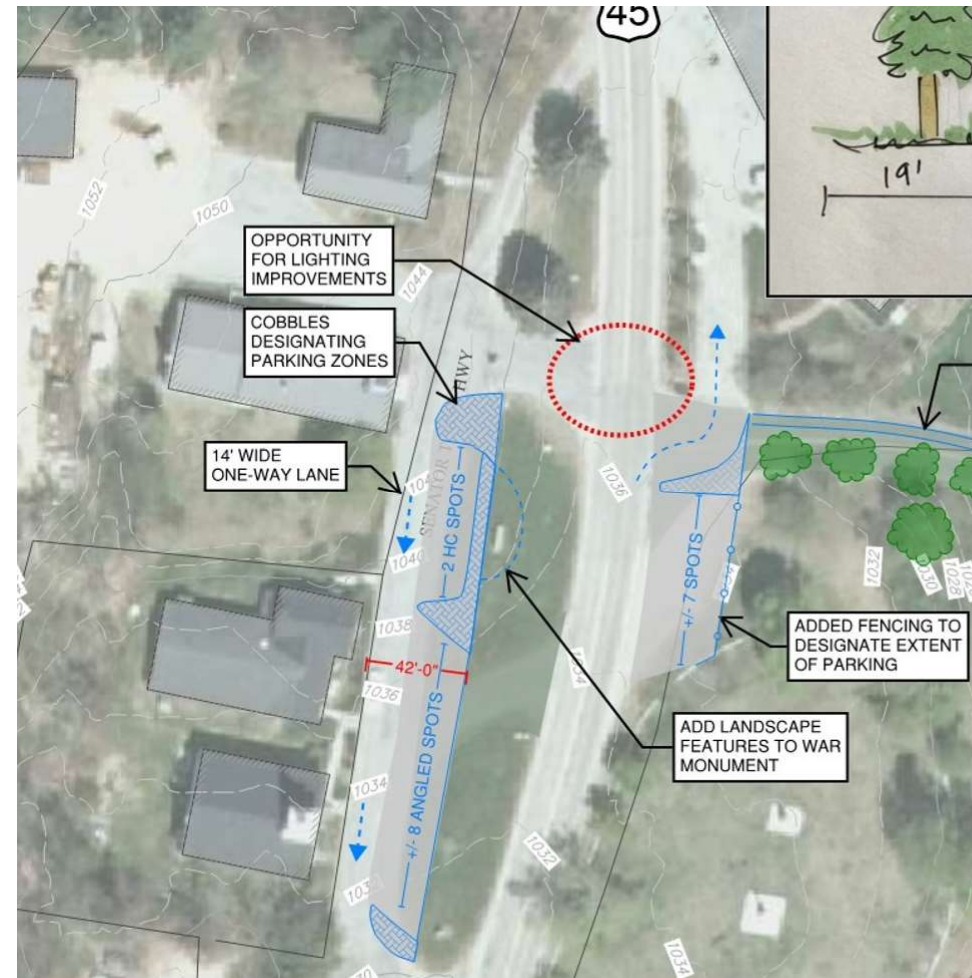
- Narrow Rte. 45 in the Village Center
- Reclaim green space within the island in front of the church, similar to what was done in front of the library, to reduce turning options on Rte. 45.
- Firehouse Lane: Understand the usage of Firehouse Lane and the possibility of reclaiming the space to create an expanding Town Square.



Defining Existing Parking

Defining our existing parking would result in 2 handicapped parking spaces and 25 everyone spots (27 total).

- Add and define parking in front of the town hall and church (2 handicapped spots & 8 angled spots).
- Define 7 head-in spots next to the Village Green.



Defining Existing Parking (continued)

3. Formalize the parking alongside the library and at the rear of the town hall.

- 3 spaces next to the Town Hall
- 6 or 7 spaces in front of the library





Add Parking on the Village Green

Create an "Event Parking" area at the lower section of the Village Green. The street parking could be connected with the event parking lot, which would yield roughly 20 spots, by a footpath along Firehouse Lane, creating a logical connection to both areas. To help maintain the Village feel, some plantings and screenings could be installed.



Add Parking If/When the Hwy Dept Moves

Moving the Hwy Dept would allow for an area that could hold up to 60 vehicles. A parking area of this size would take vehicles off the road and grass areas in the Village Center, creating a safer environment during events and town meetings.



photo by Scott Hecker

Other Ideas

Green Space

Create a courtyard area behind the library along with some open green space. This space could be used to hold library events as well as by the community.

Pedestrian Path **Historical Soc.**

To move people from the parking area to Main Street safely, a pedestrian path could be created in the green space next to the town hall.

Move the historical society to the former DPW area. This would bring it to the town center and give easy access to the library for historical records.

Summary of Ideas

Improve lighting

Complete Streets

- Pursue Complete Streets
- Narrow Rte. 45
- Reclaim green space within the island in front of the church
- Reclaim Firehouse Lane

Define Existing Parking

- Define 2 handicapped and 8 angled spots in front of the town hall and church
- Define 7 head-in spots next to the Village Green
- Define 3 spaces next to the Town Hall
- Define 6-7 spaces in front of the library
- Define all existing parking (27 spots total)

Add Parking

- Create an "Event Parking" area at the lower section of the Village Green - 20 spots
- Create a parking area if/when the hwy dept moves that could hold up to 60 vehicles

Other Ideas

- Create a courtyard or green space behind the library
- Pedestrian path
- Move the historical society to the hwy dept area (if or when it moves)

Don't Change Anything!



**Thanks for your
ideas and input!**