

BEN'S MAPLE HEADQUARTERS

WEBSTER HIGHWAY
TEMPLE, NH 03084

SYMBOLS & ABBREVIATIONS

SYMBOLS:

∠	ANGLE
±	APPROX. DIMENSION
⊕	CENTERLINE
∅	DIAMETER

ABBREVIATIONS:

AC	AIR CONDITIONING
APPROX	APPROXIMATE
BOT	BOTTOM
CAD	COMPUTER AIDED DESIGN
CB	CATCH BASIN
CERT	CERTIFICATION
CJ	CONTROL JOINT
CMU	CONCRETE MASONRY UNIT
CONT	CONTINUOUS
COL	COLUMN
DIA	DIAMETER
DIM	DIMENSION
DWG	DRAWING
EL	ELEVATION
ELEC	ELECTRICAL
ELEV	ELEVATOR
EQ	EQUAL

EW	EACH WAY
EX	EXISTING
EXT	EXTERIOR
FD	FLOOR DRAIN
FF	FINISHED FLOOR
FND	FOUNDATION
FTG	FOOTING
GA	GAUGE
GALV	GALVANIZED
GYP	GYPSUM
HDR	HEADER
HW	HOT WATER TANK
ID	INSIDE DIAMETER
INT	INTERIOR
LBS	POUNDS (WEIGHT)
LW	LIGHT WEIGHT
MAX	MAXIMUM
MECH	MECHANICAL
MIN	MINIMUM
MISC	MISCELLANEOUS
NOM	NOMINAL
NTS	NOT TO SCALE
OC	ON-CENTER
OD	OUTSIDE DIAMETER
ORIG	ORIGINAL
PL	PLATE

PSF	POUNDS PER SQ. FT
PSI	POUNDS PER SQ. INCH
PT	PRESSURE TREATED
RA	RETURN AIR
R	RADIUS
REF	REFERENCE
REIN	REINFORCE
REQ	REQUIRED
REV	REVISION/REVISED
RD	ROOF DRAIN
RO	ROUGH OPENING
RTU	ROOF TOP UNIT
SHT	SHEET
SIM	SIMILAR
SN	SERIAL NUMBER
SS	STAINLESS STEEL
STD	STANDARD
TOC	TOP OF CONCRETE
TOS	TOP OF SLAB
TOW	TOP OF WALL
TYP	TYPICAL
UNO	UNLESS NOTED OTHERWISE
VB	VAPOR BARRIER
VIF	VERIFY IN FIELD
WO	WITHOUT
WWF	WELDED WIRE FABRIC

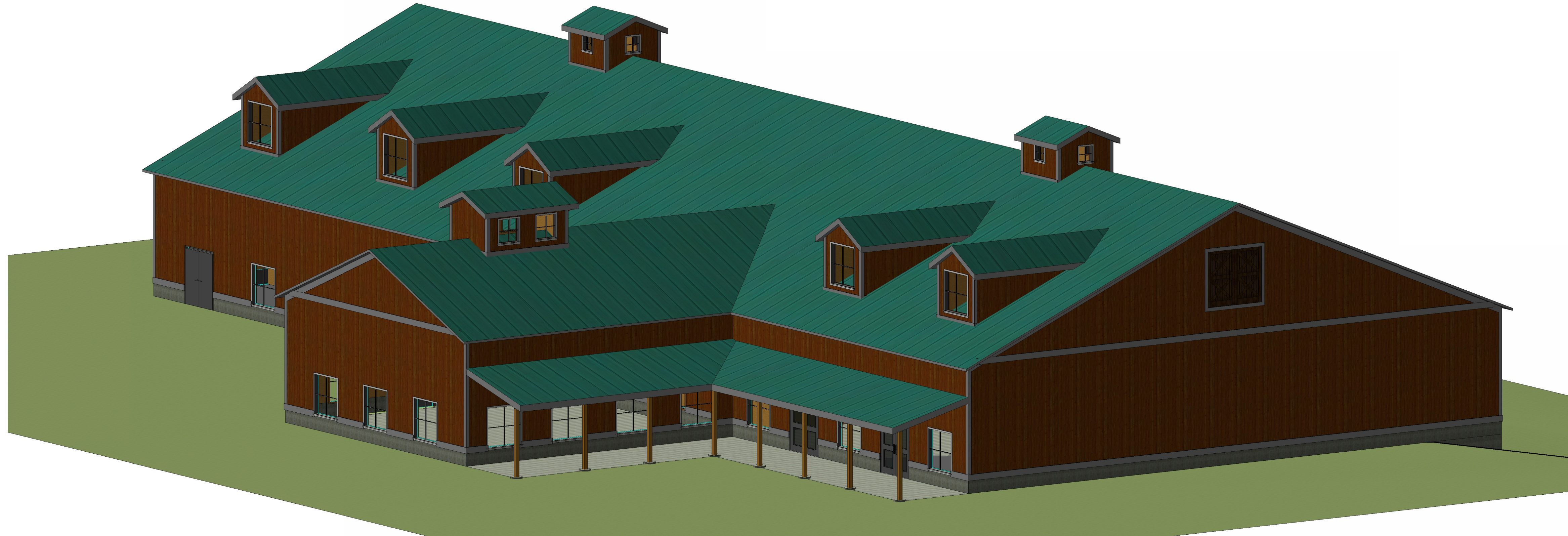
BUILDING DESCRIPTION

BUILDING HEIGHT:	42'-00"
NO. OF STORIES:	1 STORY
TOTAL AREA:	15,422 SF

LEGEND

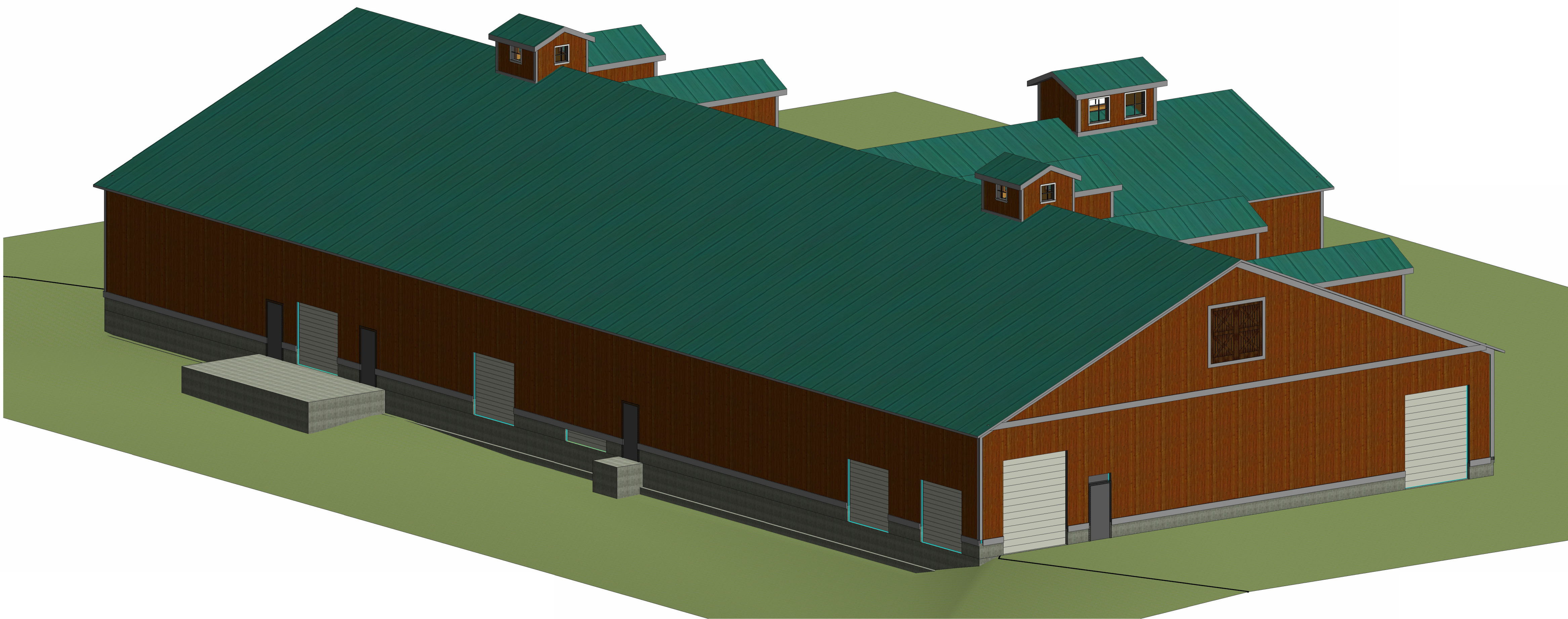
	SECTION CUTLINE
	DOOR LABEL
	WINDOW LABEL
	JOIST HANGER
	BREAKLINE

VICINITY MAP



ISOMETRIC FRONT

SCALE:



ISOMETRIC REAR

SCALE:

4/26/2019 8:30:16 AM M:\Client Docs\ActiveBens Pure Maple-Webster Hwy Temple Headquarters Struct Design\Plans & Specs\TEAM ENG PLAN-Bens Maple Syrup Structural.rvt



TEAM ENGINEERING
 80 Palomino Lane
 Suite 402
 Bedford, NH 03110
 Phone: (603) 497-3137
 www.MyTeamEngineering.com

REVISION:	DATE:
APPROVAL	04/23/2019

- DRAFT
- APPROVAL
- BID
- PERMIT
- CONSTRUCTION

STAMP:
NOT FOR CONSTRUCTION

CLIENT:
 Ben's Pure Maple Products, LLC

BEN'S MAPLE HEADQUARTERS
 PROPERTY: Webster Highway
 Temple, NH

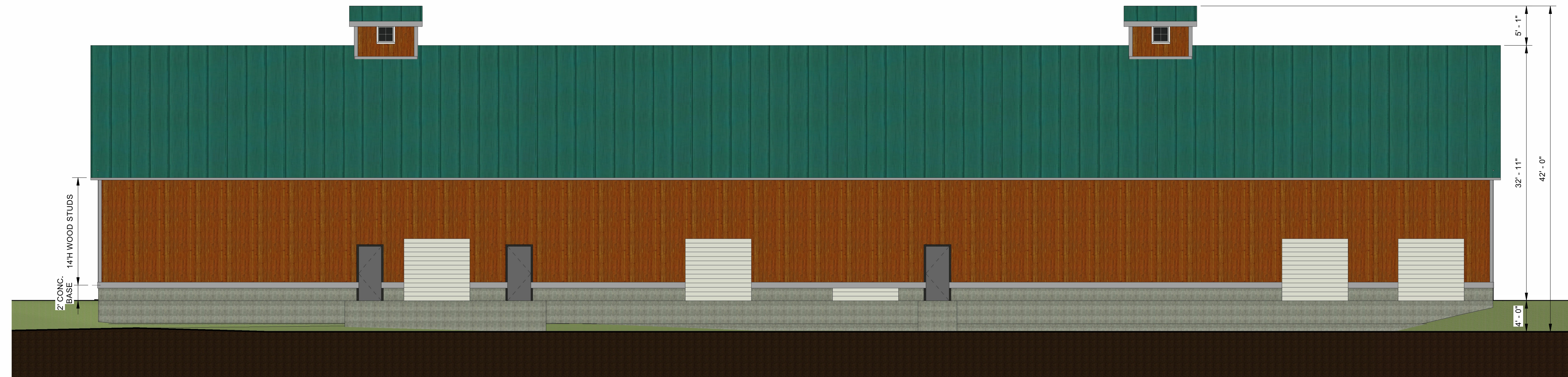
SHEET TITLE:
ISOMETRIC VIEWS

A1.0

SHEET: 3 of
 DWG: BWK CHK: JPT



SOUTH
SCALE: 1/8" = 1'-0"



NORTH
SCALE: 1/8" = 1'-0"

REVISION:	DATE:
APPROVAL	04/23/2019

- DRAFT
- APPROVAL
- BID
- PERMIT
- CONSTRUCTION

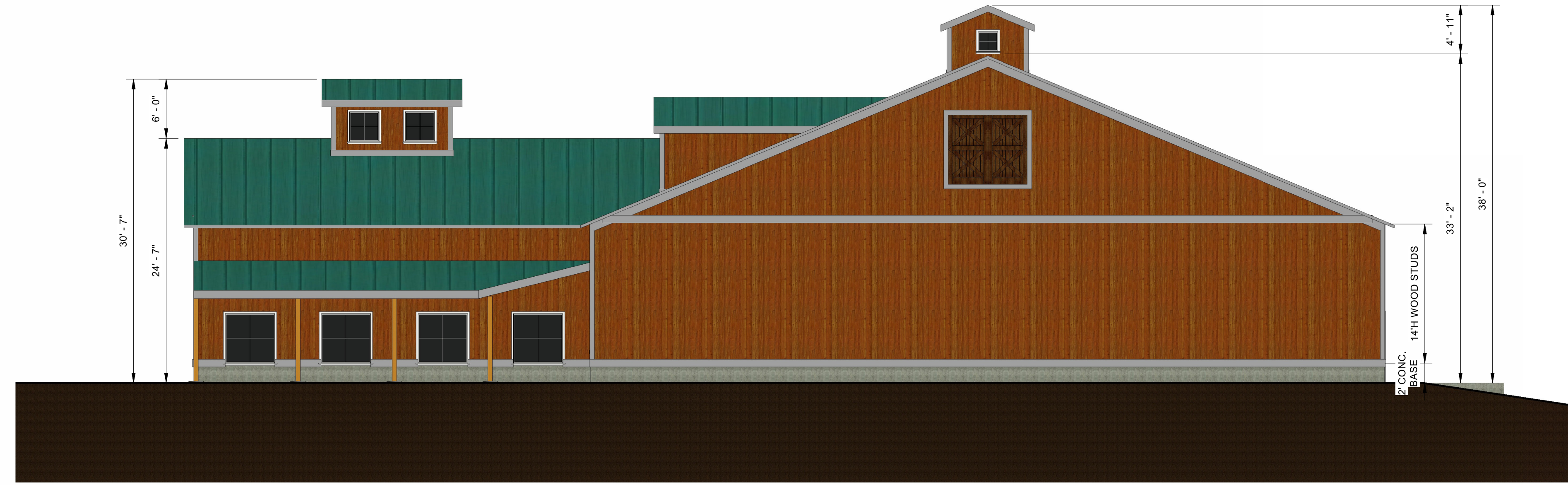
STAMP:
NOT FOR CONSTRUCTION

CLIENT:
Ben's Pure Maple Products, LLC

BEN'S MAPLE HEADQUARTERS
PROPERTY: Webster Highway
Temple, NH
SHEET TITLE:
ELEVATIONS

A2.0
SHEET: 4 of
DWG: BWK CHK: JPT

M:\Client Docs\ActiveBens Pure Maple-Webster Hwy Temple Headquarters Struct Design\Plans & Specs\TEAM ENG PLAN-Bens Maple Symp Structural.rvt 4/26/2019 8:31:03 AM



EAST
SCALE: 1/8" = 1'-0"



WEST
SCALE: 1/8" = 1'-0"

REVISION:	DATE:
APPROVAL	04/23/2019

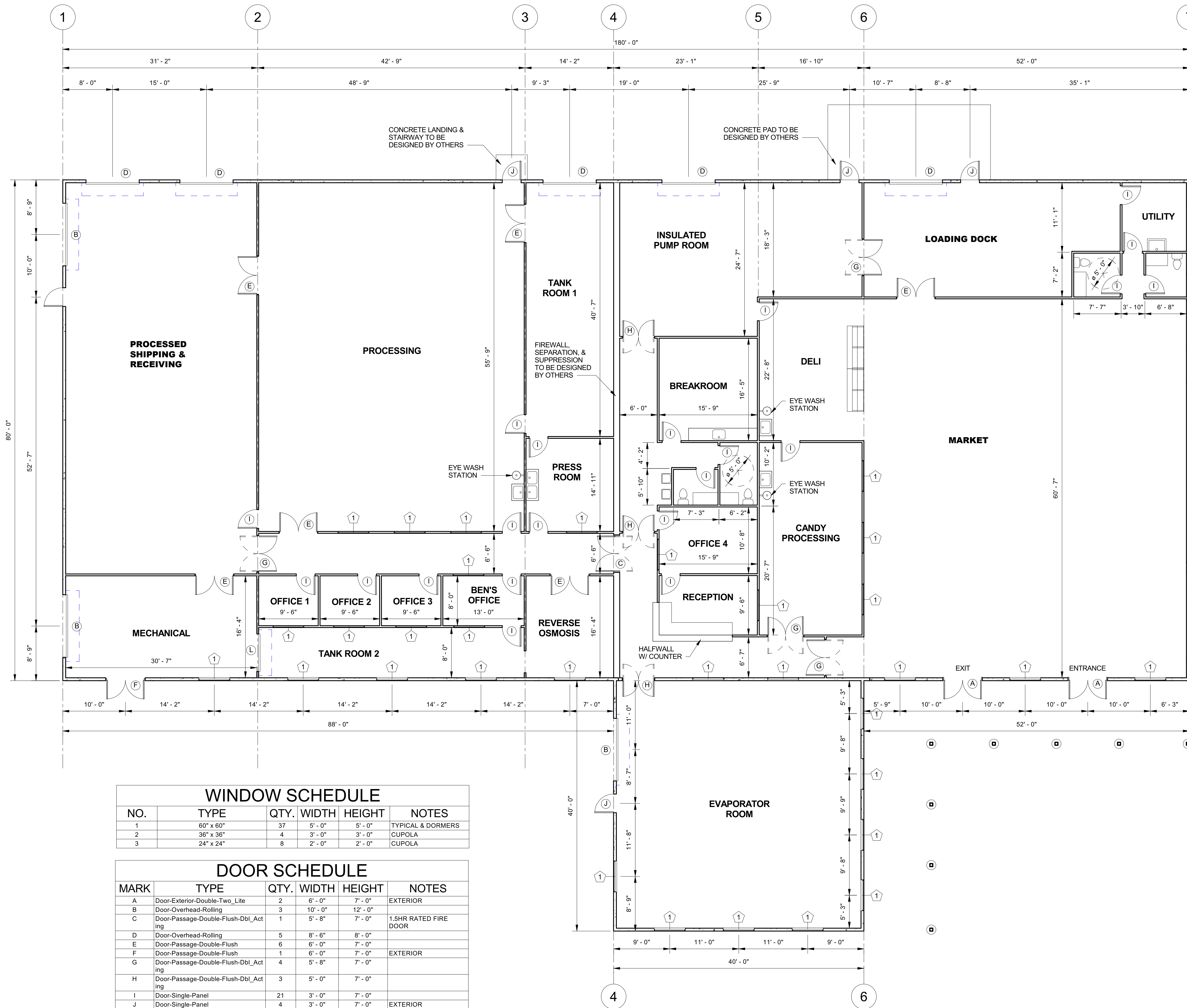
- DRAFT
- APPROVAL
- BID
- PERMIT
- CONSTRUCTION

STAMP:
NOT FOR CONSTRUCTION

CLIENT:
Ben's Pure Maple Products, LLC

BEN'S MAPLE HEADQUARTERS
PROPERTY: Webster Highway
Temple, NH
SHEET TITLE:
ELEVATIONS

4/26/2019 8:31:09 AM M:\Client Docs\Active\Bens Pure Maple\Webster Hwy Temple Headquarters Struct Design\Plans & Specs\TEAM ENG PLAN\Bens Maple Symp Structural.rvt



WINDOW SCHEDULE					
NO.	TYPE	QTY.	WIDTH	HEIGHT	NOTES
1	60" x 60"	37	5'-0"	5'-0"	TYPICAL & DORMERS
2	36" x 36"	4	3'-0"	3'-0"	CUPOLA
3	24" x 24"	8	2'-0"	2'-0"	CUPOLA

DOOR SCHEDULE					
MARK	TYPE	QTY.	WIDTH	HEIGHT	NOTES
A	Door-Exterior-Double-Two_Lite	2	6'-0"	7'-0"	EXTERIOR
B	Door-Overhead-Rolling	3	10'-0"	12'-0"	
C	Door-Passage-Double-Flush-Dbi_Acting	1	5'-8"	7'-0"	1.5HR RATED FIRE DOOR
D	Door-Overhead-Rolling	5	8'-6"	8'-0"	
E	Door-Passage-Double-Flush	6	6'-0"	7'-0"	
F	Door-Passage-Double-Flush	1	6'-0"	7'-0"	EXTERIOR
G	Door-Passage-Double-Flush-Dbi_Acting	4	5'-8"	7'-0"	
H	Door-Passage-Double-Flush-Dbi_Acting	3	5'-0"	7'-0"	
I	Door-Single-Panel	21	3'-0"	7'-0"	
J	Door-Single-Panel	4	3'-0"	7'-0"	EXTERIOR
K	TE - Barn Door	4	4'-0"	7'-0"	GABLE END
L	Door-Overhead-Rolling	1	6'-0"	10'-0"	
M	Door-Single-Panel	1	3'-0"	7'-0"	EXTERIOR

MAIN FLOOR PLAN
SCALE: 1/8" = 1'-0"



TEAM ENGINEERING
80 Palomino Lane
Suite 402
Bedford, NH 03110
Phone: (603) 497-3137
www.MyTeamEngineering.com

REVISION:	DATE:
APPROVAL	04/23/2019

- DRAFT
- APPROVAL
- BID
- PERMIT
- CONSTRUCTION

STAMP:
NOT FOR CONSTRUCTION

CLIENT:
Ben's Pure Maple Products, LLC

BEN'S MAPLE HEADQUARTERS
PROPERTY: Webster Highway
Temple, NH
SHEET TITLE:
FLOOR PLAN

A3.0
SHEET: 6 of 6
DWG: BWK CHK: JPT