

Please replace the last 14 sheets (Labeled 6A through 13B)  
in Attorney Silas Little's submission to the ZBA  
with the attached 14 sheets (Also labeled 6A through 13B).



NH Route 45 | NH Route 101 | Webster Highway Intersection

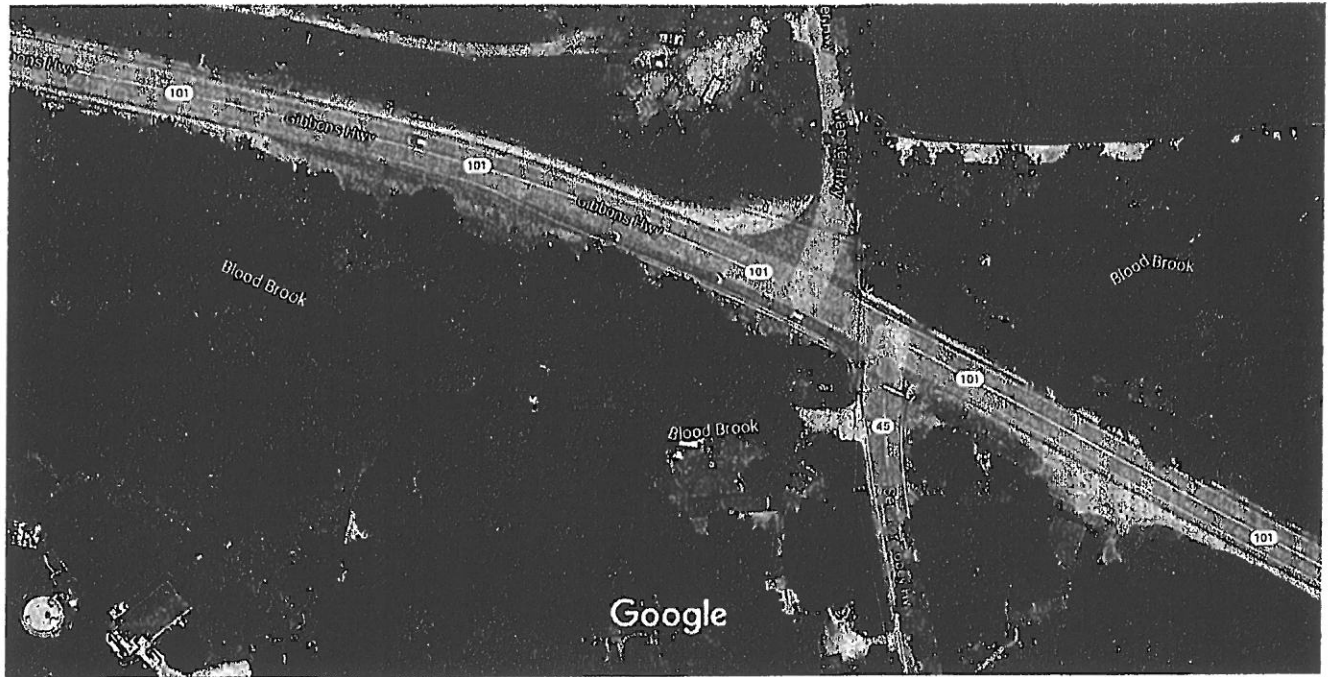


Ben's Pure Maple Products, LLC in the Whiting Field



Ben's Maple Products, LLC in the Whiting Field (need to add windows)

Google Maps



Imagery ©2020 Maxar Technologies, Map data ©2020 50 ft



The State of New Hampshire  
**Department of Environmental Services**

Thomas S. Burack, Commissioner



August 19, 2016

MR. BEN FISK  
BEN'S PURE MAPLE PRODUCTS, LLC  
83 WEBSTER HIGHWAY  
TEMPLE, NH 03084

**REGISTRATION (5A20)**

**SUBJECT: TEMPLE** – Ben's Pure Maple Products, LLC, 83 Webster Highway,  
Nondomestic Wastewater Discharge  
(Site# 201608031 / RSN# 37114 / Activity# 236815)

Dear Mr. Fisk:

The Department of Environmental Services' (Department) has received the registration form and supporting information for the discharge of nondomestic wastewater generated at the subject facility in response to the Department's August 1, 2016. The submission fulfills the regulatory requirements of Env-Wq 402, "Groundwater Discharge Permit and Registration Rules."

The following conditions apply to a facility that discharges nondomestic wastewater to the ground and/or groundwater:

1. This registration is for discharge of nondomestic wastewater generated from equipment rinsing and floor washing activities within the identified structure.
2. No additional graywater or black water discharges are permitted without Department approval.
3. The registrant shall forward Safety Data Sheets for any cleaning and/or disinfecting products used that will discharge to the environment.
4. The facility owner shall be responsible for ensuring that all employees are aware of appropriate discharges and refrain from inappropriate discharges. Disposal of thinners, solvents, pharmaceuticals, or dumping of bulk or expired products to the infiltration structure is prohibited.
5. All wastewater discharges shall infiltrate to the ground on site.
6. Any discharge of nondomestic wastewater or comingled storm water and wastewater to surface water, wetland, or storm water drainage way is prohibited.

This registration is acknowledgement that nondomestic wastewater is discharging to an on-site infiltration structure and given the submitted information to date, no chemicals or products used are identified as a regulated contaminant(s).

It should be noted that the placement of the infiltration structure is directly below the building's dripline. Flooding of the infiltration ditch by storm water causing runoff to a surface water, wetland, or storm water drainage way is a violation. Efforts should be made to minimize the impact of storm water on the nondomestic wastewater infiltration structure.

If you have any questions or comments concerning this registration please contact me at 271-2858 or by e-mail at [mitchell.locker@des.nh.gov](mailto:mitchell.locker@des.nh.gov).

Sincerely,



Mitchell D. Locker, P.G.  
Drinking Water & Groundwater Bureau  
Groundwater Recharge Program  
29 Hazen Drive  
PO Box 95  
Concord, NH 03302-0095

Phone 603.271.2858

MDL/ml S:\WD-DWGB\...\UIC\2016mdl\registration\201608031 5A20 ndw  
e-copy: Stephen Roy, DWGB  
File  
copy Peter Caswell, Temple Health Officer  
Temple Board of Selectmen

# Ben's SUGAR SHACK

In 2021 Ben's Sugar Shack would like a bigger facility in order to meet all demands for maple syrup production. Attached to the facility will be a retail store to offer maple products and other grocery essentials. Below you will find a list of items that will be offered to our customers. Each category is broken down with how many square feet the displays/shelves will have. Total of 3000 SQ FT.

These are estimated sizes and have not been finalized yet.

## 1000 SQ FT Maple Display

- Pure Maple products, maple confectionaries, maple baked goods

## 200 SQ FT Deli and Prepared Foods

- Ready to eat products such as sandwiches, soups, salads, entrees

## 240 SQ FT Produce Section

- Including in season and local vegetables and fruits

## 108 SQ FT Bakery Displays

- Including 3 displays to merchandize local bakeries (e.g) Orchard Hill bakery/Kernal Bakery breads, home-made scones, pastries, Danish breads, muffins, etc.

## 90 SQ FT Meet/Seafood

- Including a butcher counter with custom cut meats and a small seafood display on ice. (e.g) Burger, steaks, roasts from local farms. Seafood (e.g) from S&S seafoods- Salmon, Haddock, Shrimp, Scallops, Lobsters in Season, Mussels In Season, Tuna and Swordfish.

## 400 SQ FT Grocery Essentials

- Including 3 aisles with wooden displays.  
Small section of cleaning products including paper towels, toilet paper, soaps, tin foils, etc.  
Remainder of dry goods, including cereals, pasta, canned items, chips, crackers, beverages, candy, specialty items, etc. Most items will be locally made or from small businesses.

## 54 SQ FT Freezer Section

- Including prepared foods made from scratch out of the dell, (e.g lasagna, casseroles, soups, etc)



Frozen meat, local ice cream, vegetables, breads, pizzas, etc.

150 SQ FT Refrigeration

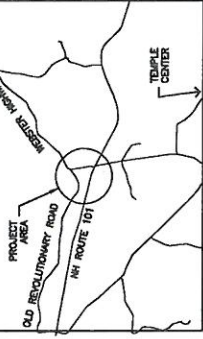
- Including milk, juice, eggs, dairy items, cheese, beverages, ready to eat foods, etc.

Remaining SQ FT (approx. 758) will consist of seating for customers, 2 register counters, cart storage, walk ways, other small/seasonal displays.

We are striving for locally made products and specialty items. We do not want to carry the same brands as a major retailer or grocery store. We want our market to stand out with unique items that will keep customers coming back and supporting local.

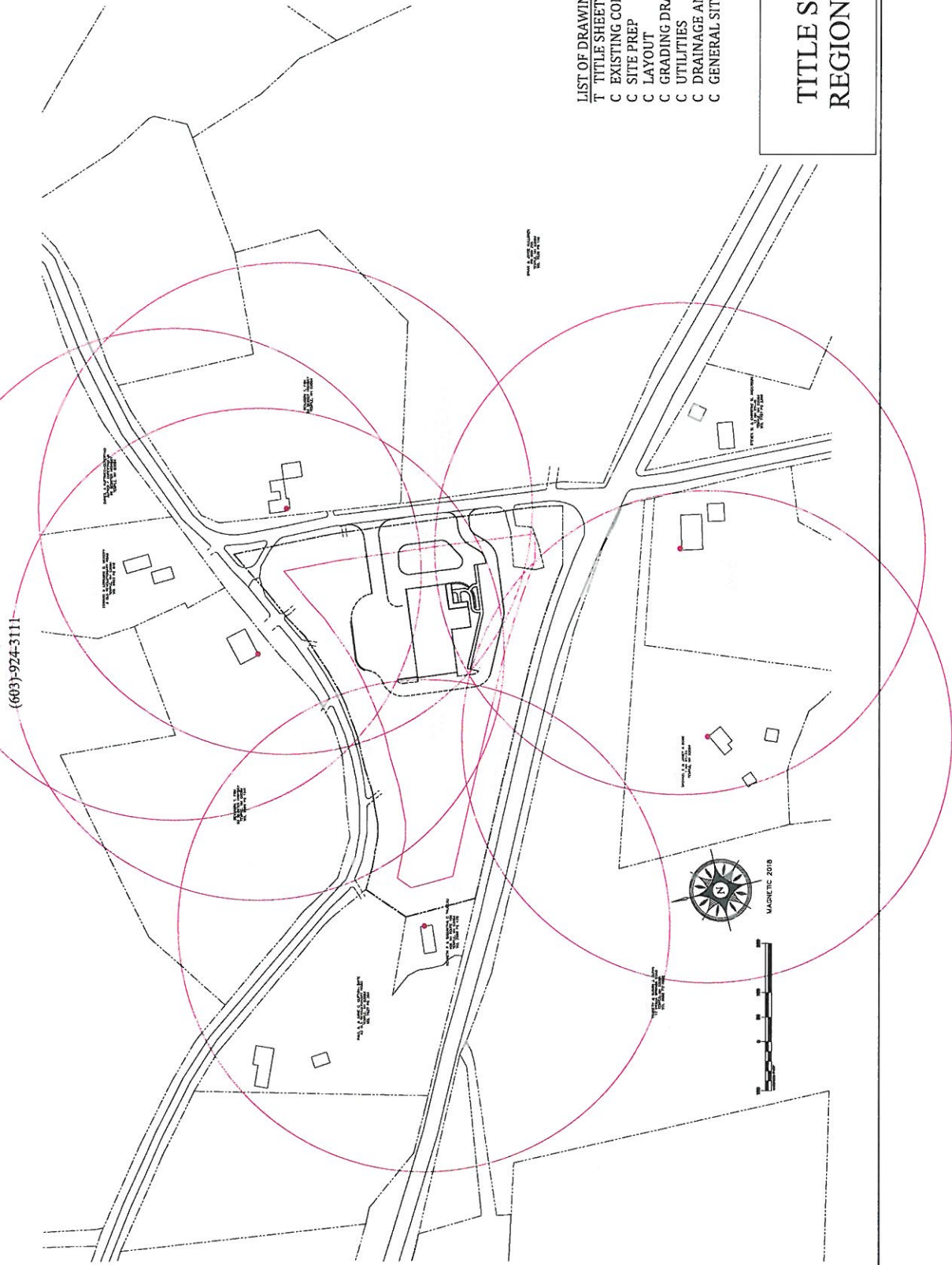
# BEN'S SUGAR SHACK

JUNE, 2020  
BEN'S MAPLE PRODUCTS LLC  
83 WEBSTER HIGHWAY, TEMPLE NH 03084  
(603)-924-3111



**Brickstone**  
Land Use Consultants, LLC  
Site Planning, Permitting and Development Consulting  
185 Winchester Street, Keene, NH 03431  
Phone: (603) 357-0116

**SA STEVENS & ASSOCIATES, P.C.**  
ARCHITECTS ENGINEERS LANDSCAPE ARCHITECTS  
185 WINCHESTER STREET, KEENE, NH 03431  
PHONE: (603) 357-0116 WWW.SASTEVENSONLINE.COM



- LIST OF DRAWINGS
- T TITLE SHEET
  - C EXISTING CONDITIONS
  - C SITE PREP
  - C LAYOUT
  - C GRADING DRAINAGE EROSION
  - C UTILITIES
  - C DRAINAGE AND EROSION CONTROL DETAILS
  - C GENERAL SITE AND CONCRETE DETAILS

## TITLE SHEET & REGIONAL MAP

PROJECT NO. 20-024

# T-1

SHEET 1 OF 8

10

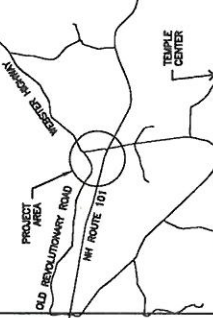
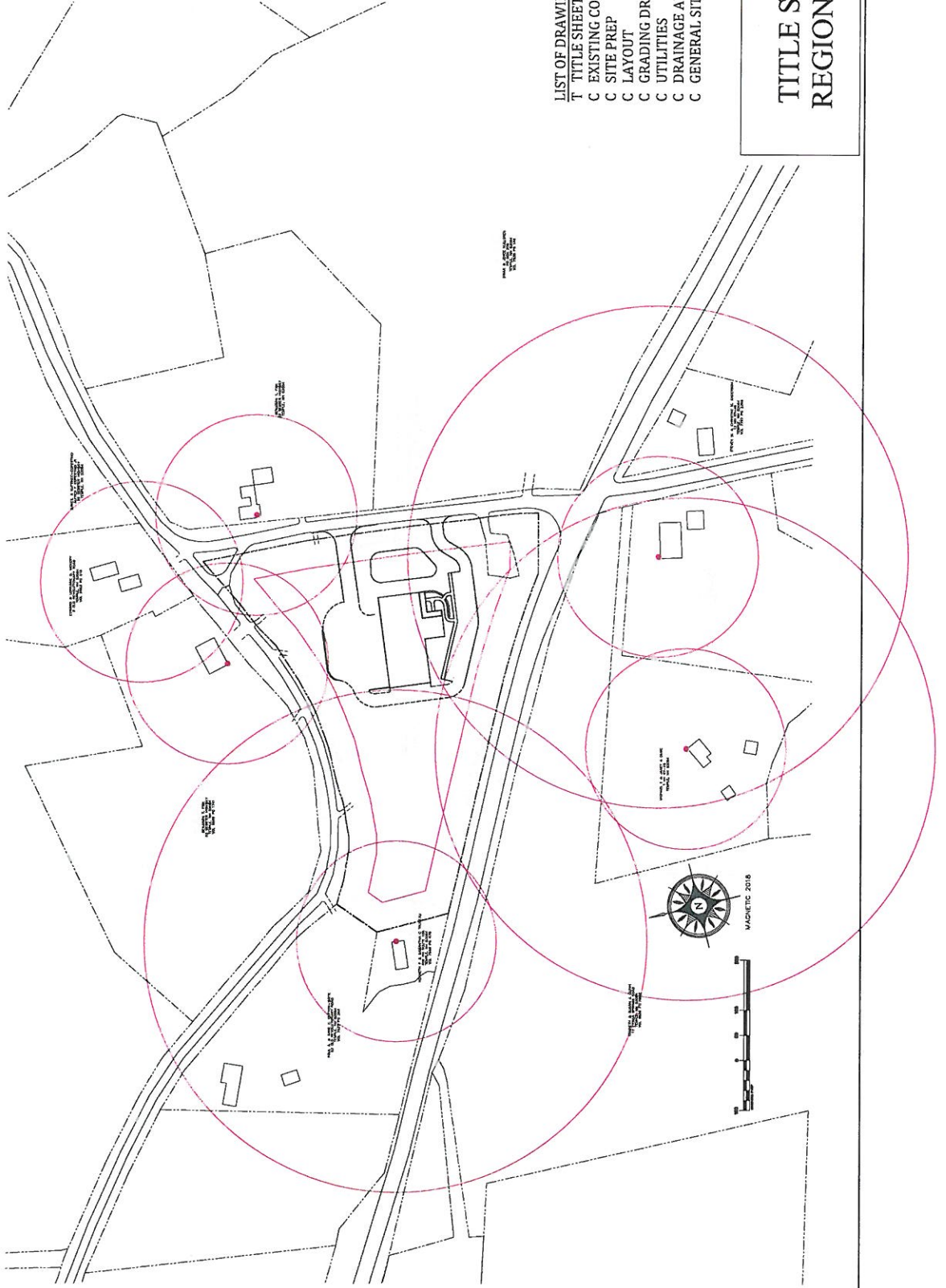
# BEN'S SUGAR SHACK

JUNE, 2020

## BEN'S MAPLE PRODUCTS LLC

83 WEBSTER HIGHWAY, TEMPLE NH 03084

(603)-924-3111



LOCUS

**Brickstone**  
Land Use Consultants | LLC  
Site Planning, Planning and Development Consulting  
185 Winchester Street, Keene, NH 03431  
Phone: (603) 357-0115

**SA STEVENS & ASSOCIATES, P.C.**  
SMALL DESIGN FOR LICENSED ARCHITECTS  
ARCHITECTS ENGINEERS LANDSCAPE ARCHITECTS  
P.O. BOX 257-9229 E. RFD 258-3072 WWW.STEVENS-ASSOCIATES.COM



- LIST OF DRAWINGS
- T TITLE SHEET
  - C EXISTING CONDITIONS
  - C SITE PREP
  - C LAYOUT
  - C GRADING DRAINAGE EROSION
  - C UTILITIES
  - C DRAINAGE AND EROSION CONTROL DETAILS
  - C GENERAL SITE AND CONCRETE DETAILS

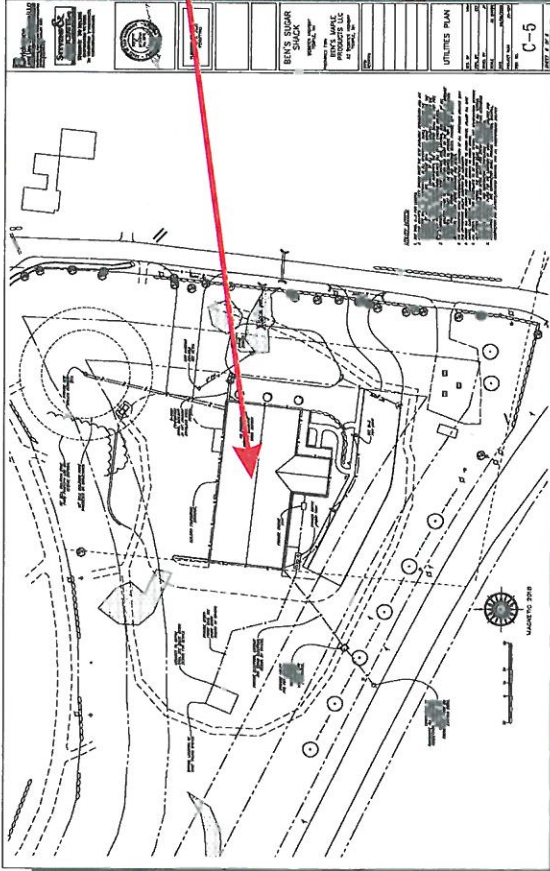
### TITLE SHEET & REGIONAL MAP

PROJECT NO. 20-024

# T-1

SHEET 1 OF 8

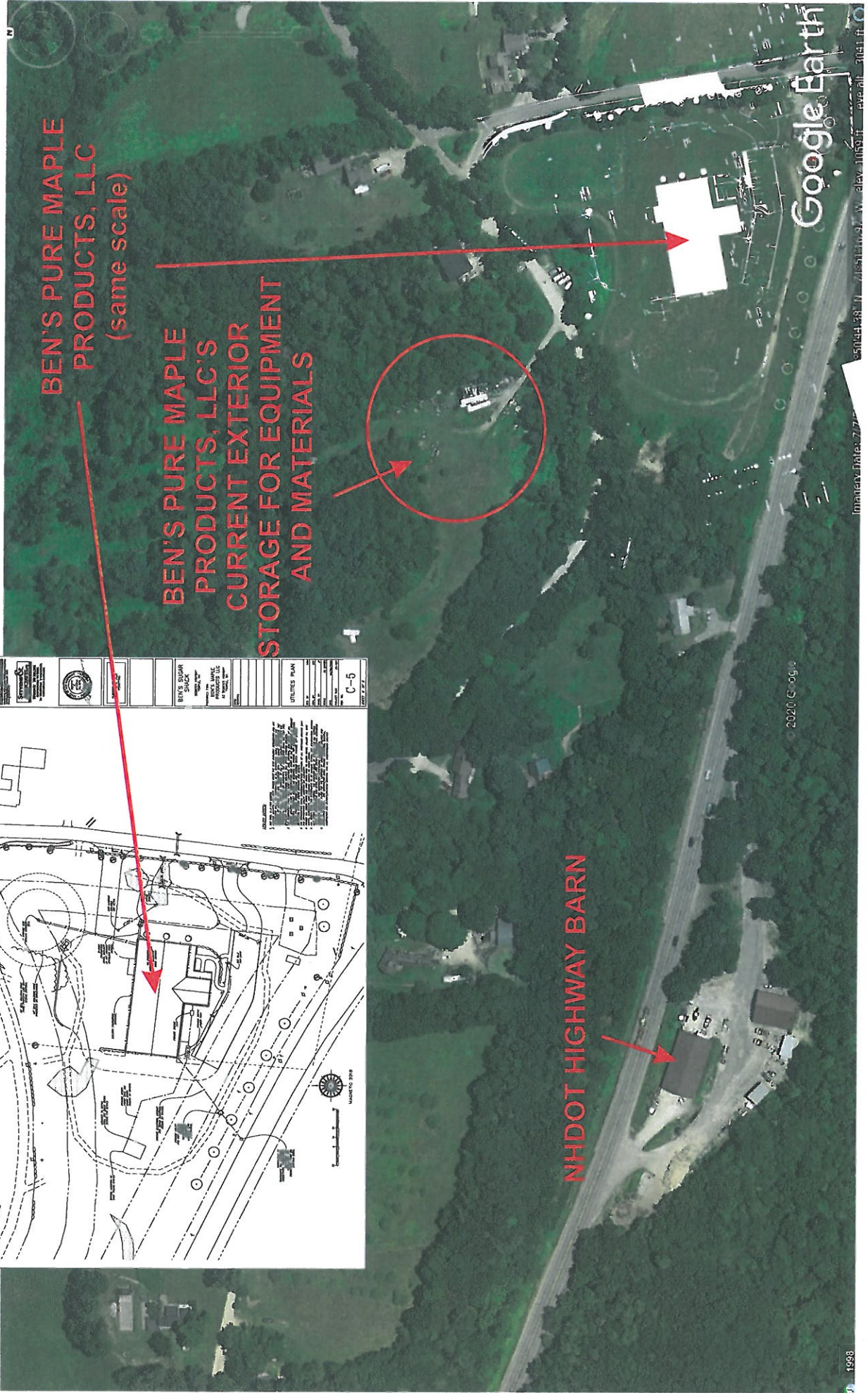
11



**BEN'S PURE MAPLE PRODUCTS, LLC (same scale)**

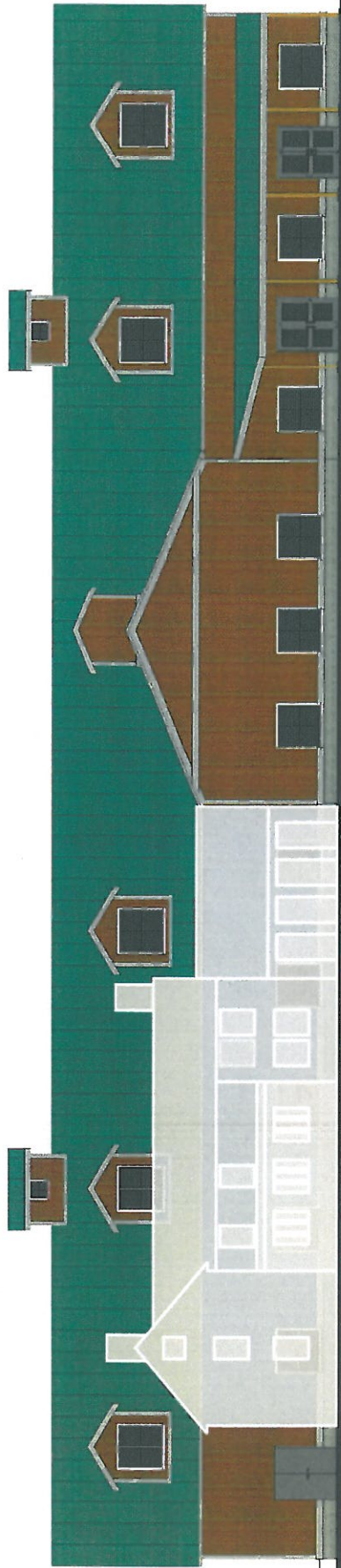
**BEN'S PURE MAPLE PRODUCTS, LLC'S CURRENT EXTERIOR STORAGE FOR EQUIPMENT AND MATERIALS**

**NHDOT HIGHWAY BARN**

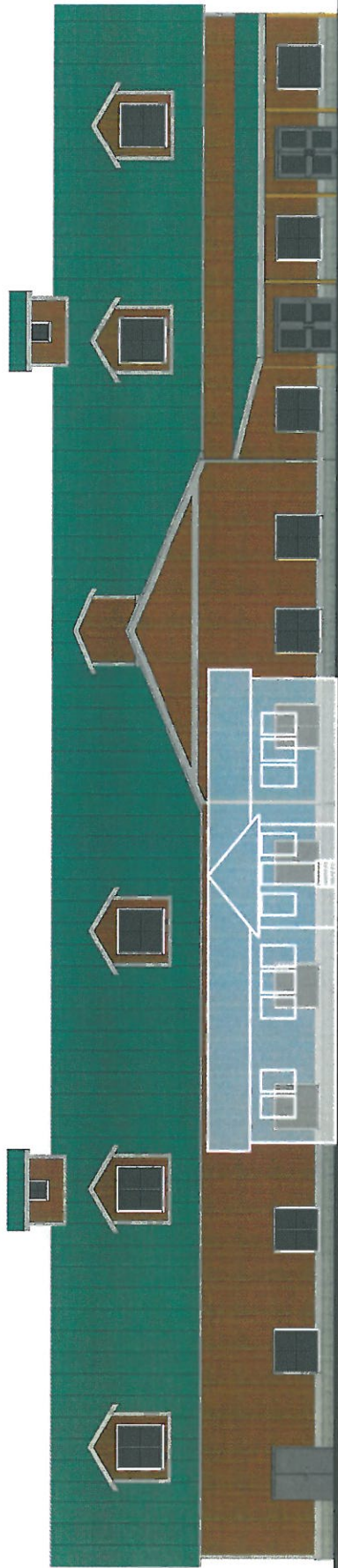


2020 © 2019

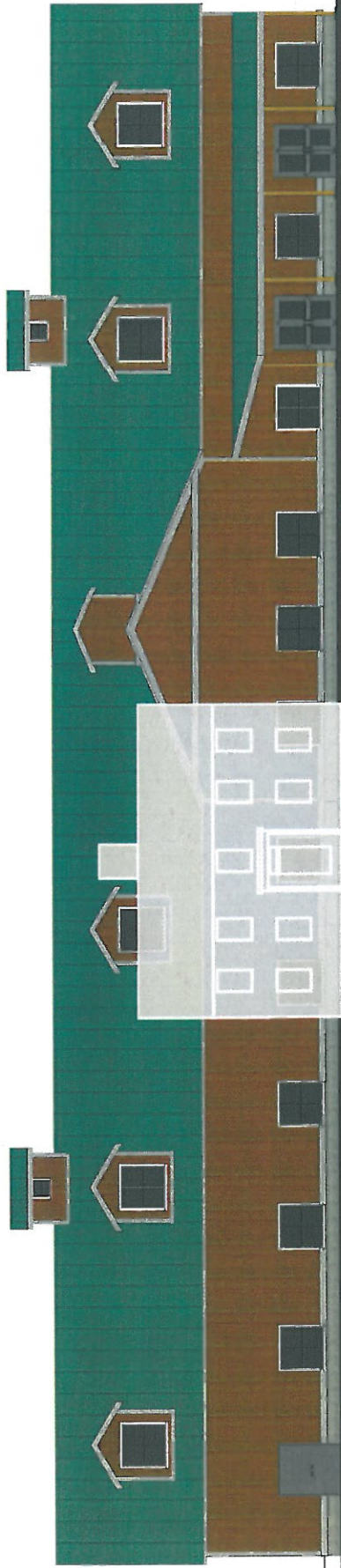
Google Earth



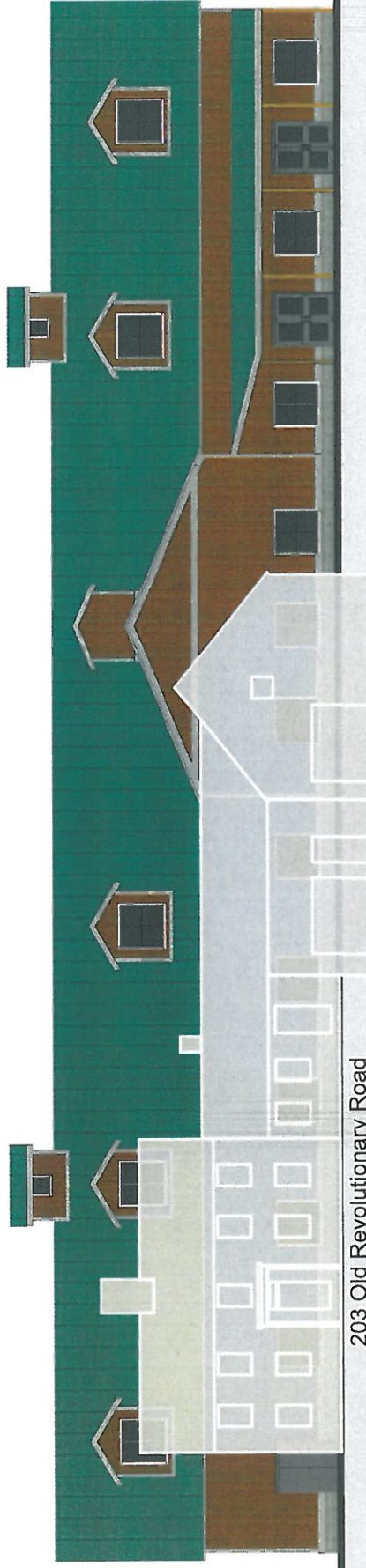
85 Old Revolutionary Road



409 NH Route 101



Old Heald-Edward-Kullgren-Fox Homestead which stood in this Whiting Field until 2012.



203 Old Revolutionary Road



Heald-Edwards-Kullgren-fox house. Photo by W.N. Banks