

PURPOSE OF DRAWING:
 JUNE 9, 2020
 PERMITTING

BEN'S SUGAR SHACK

WEBSTER HIGHWAY
 TEMPLE, NH

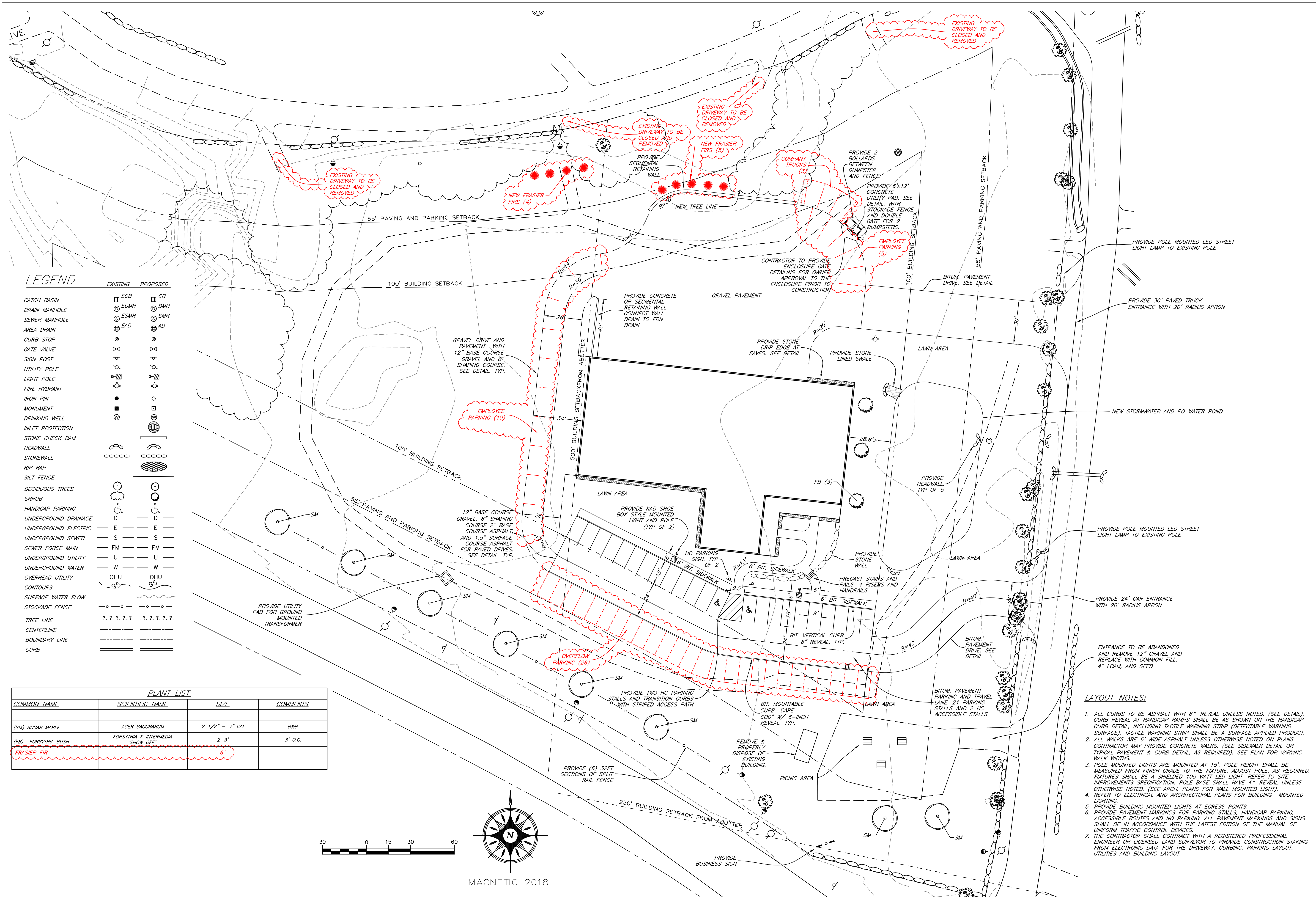
PREPARED FOR:
BEN'S MAPLE PRODUCTS LLC
 83 WEBSTER HIGHWAY
 TEMPLE, NH

DATE: NOVEMBER 24, 2020
 REVISION: EMPLOYEE PARKING, OVERFLOW PARKING
 DATE: MAY 21, 2021
 REVISION: ADD FRASIER FIRS

LAYOUT PLAN

DES. BY	HRH
DWN. BY	EEF
CHKD. BY	JP
SCALE	AS SHOWN
DATE	06/09/2020
PROJECT NUM:	20-024
DWG. NO.	

C-3

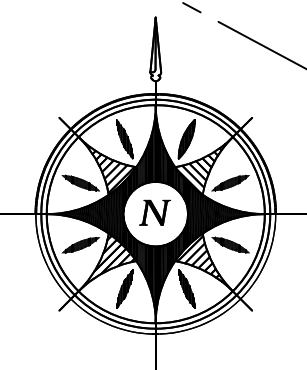


LEGEND

EXISTING	PROPOSED	
CATCH BASIN	ECB	CB
DRAIN MANHOLE	EDMH	DMH
SEWER MANHOLE	ESMH	SMH
AREA DRAIN	EAD	AD
CURB STOP		
GATE VALVE		
SIGN POST		
UTILITY POLE		
LIGHT POLE		
FIRE HYDRANT		
IRON PIN		
MONUMENT		
DRINKING WELL		
INLET PROTECTION		
STONE CHECK DAM		
HEADWALL		
STONEMASS		
RIP RAP		
SILT FENCE		
DECIDUOUS TREES		
SHRUB		
HANDICAP PARKING		
UNDERGROUND DRAINAGE	D	D
UNDERGROUND ELECTRIC	E	E
UNDERGROUND SEWER	S	S
SEWER FORCE MAIN	FM	FM
UNDERGROUND UTILITY	U	U
UNDERGROUND WATER	W	W
OVERHEAD UTILITY	OBU	OBU
CONTOURS	95	95
SURFACE WATER FLOW		
STOCKADE FENCE		
TREE LINE
CENTERLINE		
BOUNDARY LINE		
CURB		

PLANT LIST

COMMON NAME	SCIENTIFIC NAME	SIZE	COMMENTS
(SM) SUGAR MAPLE	ACER SACCHARUM	2 1/2" - 3" CAL	B&B
(FB) FORSYTHIA BUSH	FORSYTHIA X INTERMEDIA	2-3'	3' O.C.
FRASIER FIR		6"	



MAGNETIC 2018

LAYOUT NOTES:

- ALL CURBS TO BE ASPHALT WITH 6" REVEAL UNLESS NOTED. (SEE DETAIL). CURB REVEAL AT HANDICAP RAMP SHALL BE AS SHOWN ON THE HANDICAP CURB DETAIL, INCLUDING TACTILE WARNING STRIP (DETECTABLE WARNING SURFACE). TACTILE WARNING STRIP SHALL BE A SURFACE APPLIED PRODUCT.
- ALL WALKS ARE 6' WIDE ASPHALT UNLESS OTHERWISE NOTED ON PLANS. CONTRACTOR MAY PROVIDE CONCRETE WALKS. (SEE SIDEWALK DETAIL OR TYPICAL PAVEMENT & CURB DETAIL, AS REQUIRED). SEE PLAN FOR VARYING WALK WIDTHS.
- POLE MOUNTED LIGHTS ARE MOUNTED AT 15'. POLE HEIGHT SHALL BE MEASURED FROM FINISH GRADE TO THE FIXTURE. ADJUST POLE, AS REQUIRED. FIXTURES SHALL BE A SHIELDED 100 WATT LED LIGHT. REFER TO SITE IMPROVEMENTS SPECIFICATION. POLE BASE SHALL HAVE 4" REVEAL UNLESS OTHERWISE NOTED. (SEE ARCH. PLANS FOR WALL MOUNTED LIGHT).
- REFER TO ELECTRICAL AND ARCHITECTURAL PLANS FOR BUILDING MOUNTED LIGHTING.
- PROVIDE BUILDING MOUNTED LIGHTS AT EGRESS POINTS.
- PROVIDE PAVEMENT MARKINGS FOR PARKING STALLS, HANDICAP PARKING, ACCESSIBLE ROUTES AND NO PARKING. ALL PAVEMENT MARKINGS AND SIGNS SHALL BE IN ACCORDANCE WITH THE LATEST EDITION OF THE MANUAL OF UNIFORM TRAFFIC CONTROL DEVICES.
- THE CONTRACTOR SHALL CONTRACT WITH A REGISTERED PROFESSIONAL ENGINEER OR LICENSED LAND SURVEYOR TO PROVIDE CONSTRUCTION STAKING FROM ELECTRONIC DATA FOR THE DRIVEWAY, CURBING, PARKING LAYOUT, UTILITIES AND BUILDING LAYOUT.