



# CHARRETTE FOR TEMPLE 2022

Save the Dates!  
OCTOBER 14 & 15

A charrette is a focused brainstorming session that brings together diverse professionals to brainstorm recommendations to address challenges a community faces. Over a two-day period, the team visits the “target area,” talks with community leaders and members, and develops recommendations based on what they have seen and heard and also on their own professional knowledge

This is an opportunity for a conversation with your friends and neighbors about some key areas for our Town!

All Temple residents are encouraged to participate!



Coordinated by  
**PLAN NH**  
Visioning *for* Sustainable Communities



Community Advisory Committee  
423 Route 45  
Temple, NH. 03084

Local Postal Customer

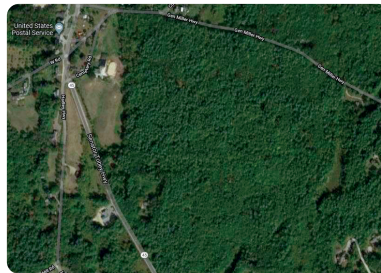
STD  
ECRWSS  
US Postage  
Paid  
EDDM Retail

# CHARRETTE FOR TEMPLE 2022

## Temple's Target Areas



Addressing the parking challenges in the village center and discussing the optimum location for our Town Highway Department facilities.



Re-imagining the town properties, especially the Holt and Skladany properties.



Creating an affordable housing neighborhood with agriculture, sustainability, and multi-generational options in mind.

---

**Be part of a dynamic, collaborative process to create a vision for Temple**

Plan NH is coming to Temple on Friday, October 14 and Saturday, October 15 to help residents think through these issues in our town.

### Public Listening Sessions

Friday, October 14th

@ Town Hall (Zoom option available)

- Session 1: 3:30 - 5:00 p.m.
- Session 2: 6:30 - 8:00 p.m.

Plan NH Team members serve as facilitators and scribes to listen to public input. Sessions are held in small groups.

### Presentation of Recommendations

Saturday, October 15th

@ Town Hall (Zoom option available)  
3:00 p.m.

This presentation will be a "reveal" of what recommendations the Plan NH team is proposing.