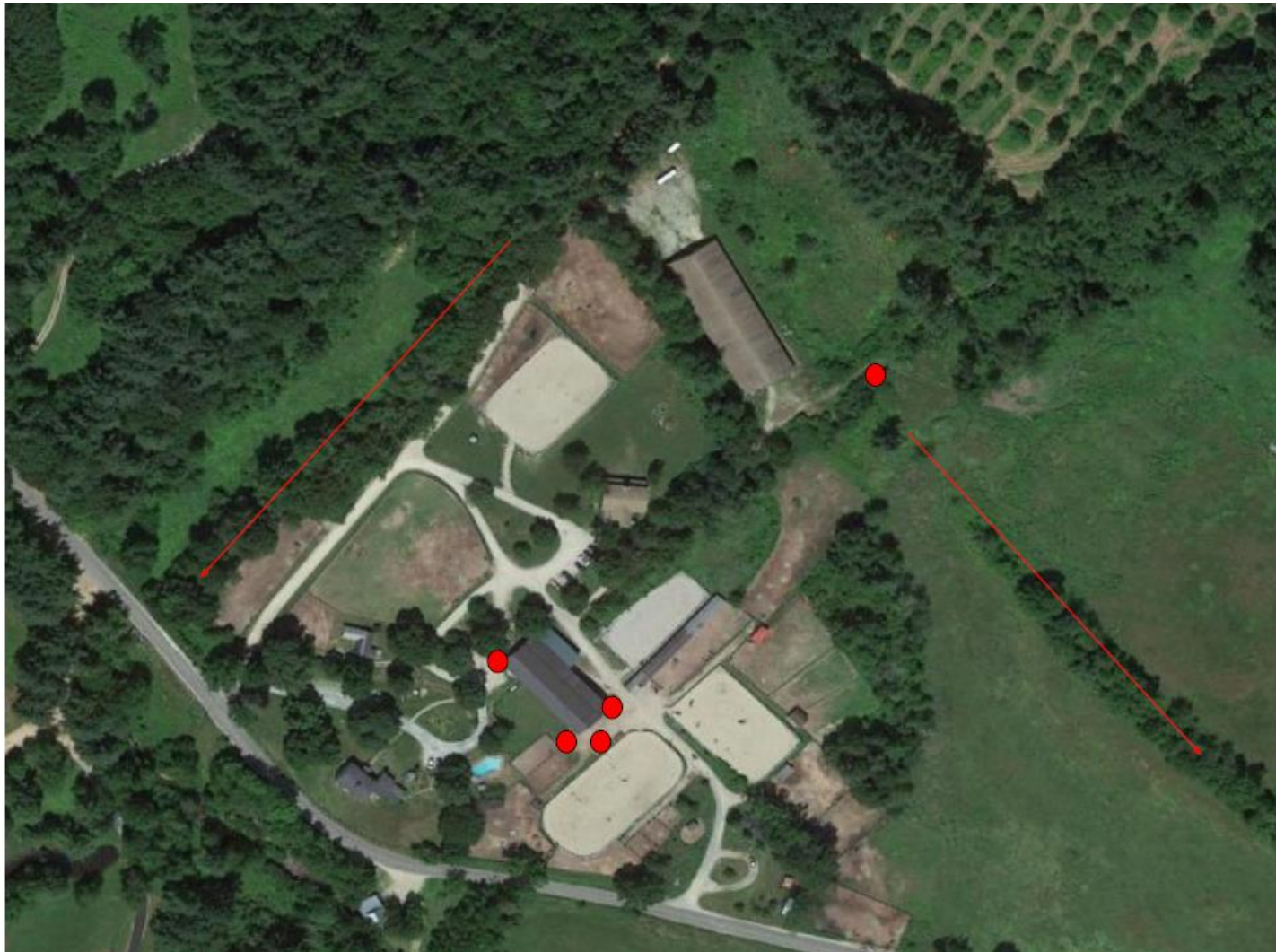


DOCUMENT #6: Map of drainage sites



Key:

- 4 red dots around the barn are the placement of the underground drainage grates, professionally installed in 2015 to prevent erosion.
- 1 red dot to left of indoor arena is the location of a pre-existing stone culvert under the road which feeds into a preserved drainage ditch. This has remained untouched since 1975 and will remain untouched.
- The red arrows denote naturally occurring drainage ditches which have remained untouched as well.