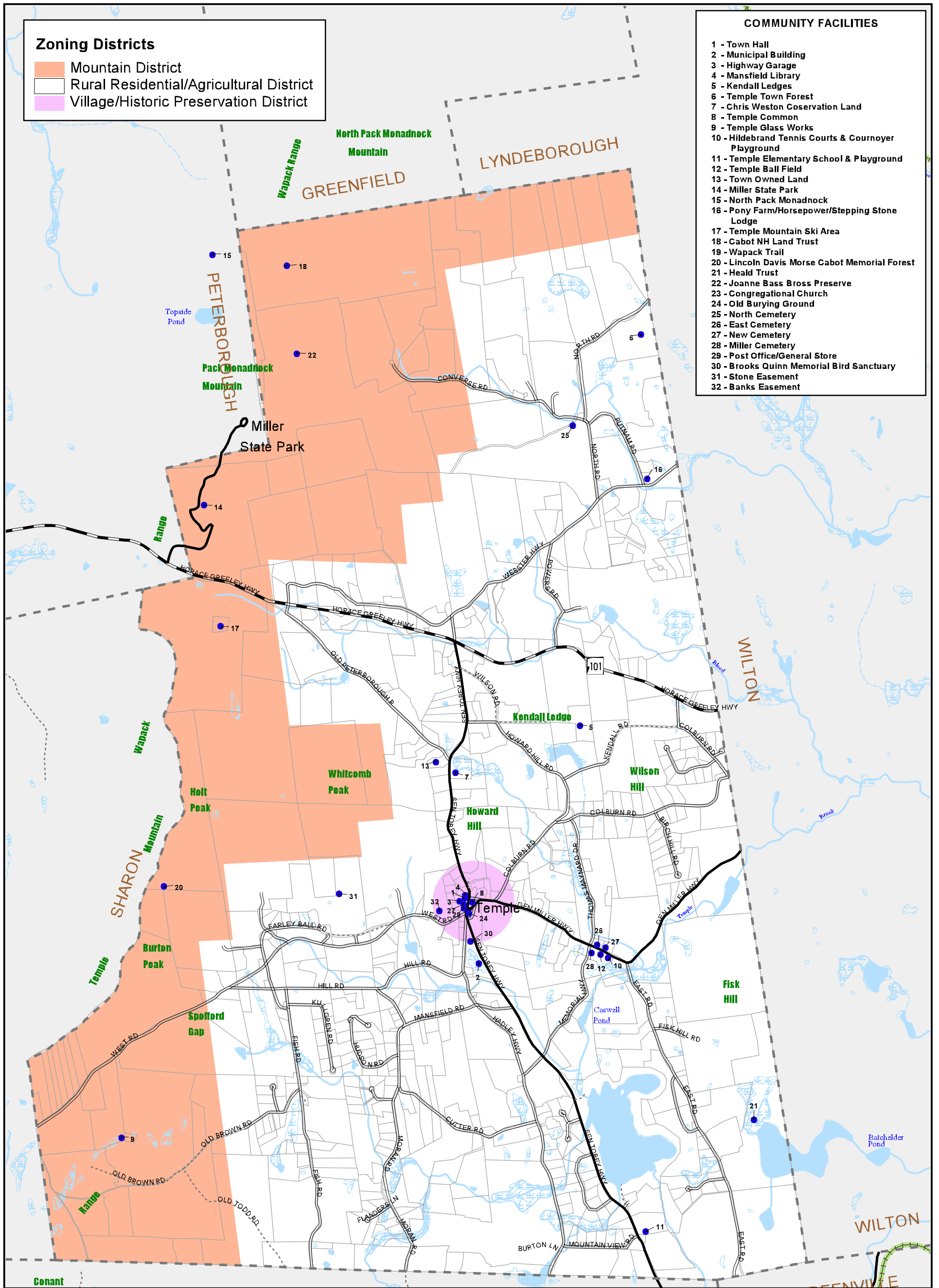


Zoning Districts

- Mountain District
- Rural Residential/Agricultural District
- Village/Historic Preservation District

COMMUNITY FACILITIES

- 1 - Town Hall
- 2 - Municipal Building
- 3 - Highway Garage
- 4 - Mansfield Library
- 5 - Kendall Ledges
- 6 - Temple Town Forest
- 7 - Chris Weston Coservation Land
- 8 - Temple Common
- 9 - Temple Glass Works
- 10 - Hildebrand Tennis Courts & Cournoyer Playground
- 11 - Temple Elementary School & Playground
- 12 - Temple Ball Field
- 13 - Town Owned Land
- 14 - Miller State Park
- 15 - North Pack Monadnock
- 16 - Pony Farm/Horsepower/Stepping Stone Lodge
- 17 - Temple Mountain Ski Area
- 18 - Cabot NH Land Trust
- 19 - Wapack Trail
- 20 - Lincoln Davis Morse Cabot Memorial Forest
- 21 - Heald Trust
- 22 - Joanne Bass Bross Preserve
- 23 - Congregational Church
- 24 - Old Burying Ground
- 25 - North Cemetery
- 26 - East Cemetery
- 27 - New Cemetery
- 28 - Miller Cemetery
- 29 - Post Office/General Store
- 30 - Brooks Quinn Memorial Bird Sanctuary
- 31 - Stone Easement
- 32 - Banks Easement



Zoning Map/Community Facilities

Town of Temple, NH



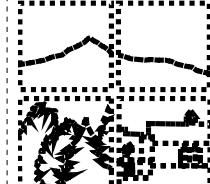
Scale = 1:36,000
0.5 0 0.5 Miles

Map Not Intended For Site Specific Work

- Community Facilities
- Waterbodies
- Wetlands*
- Watercourses
- Municipal Boundaries
- Property Lines
- Railroad/Railtrail
- DOT Road Classes
- Class I
- Class II
- Class V
- Class VI

* USFWS National Wetlands Inventory & USGS Data

Map Prepared By



SWRPC

20 Central Square, 2nd Floor
Keene, New Hampshire 03431
(603) 357-0557
fax: (603) 357-7440
<http://www.swrpc.org/>
email: admin@swrpc.org



Digital base information provided by the New Hampshire Geographically Referenced Analysis and Information Transfer System (GRANT)