

Souhegan River Watershed Management Plan

Presentation for the
[Watershed Community Group]

[Date]

by Minda Shaheen



NRPC

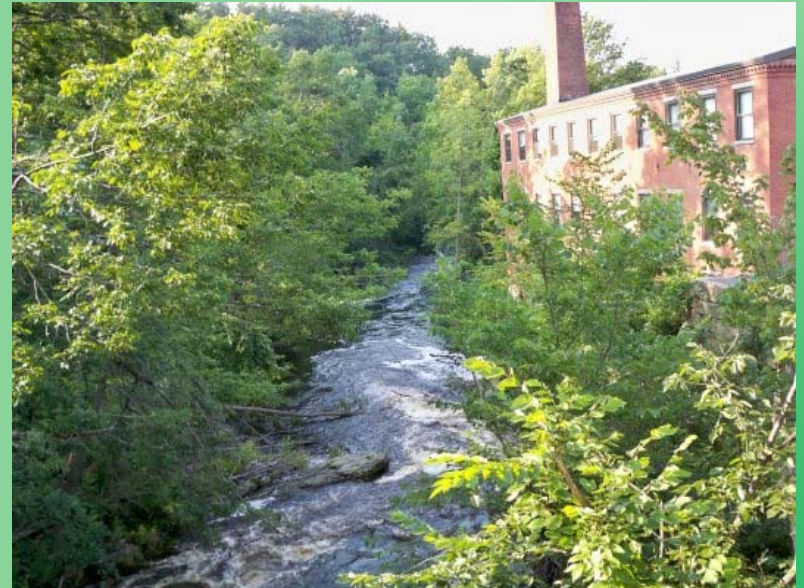


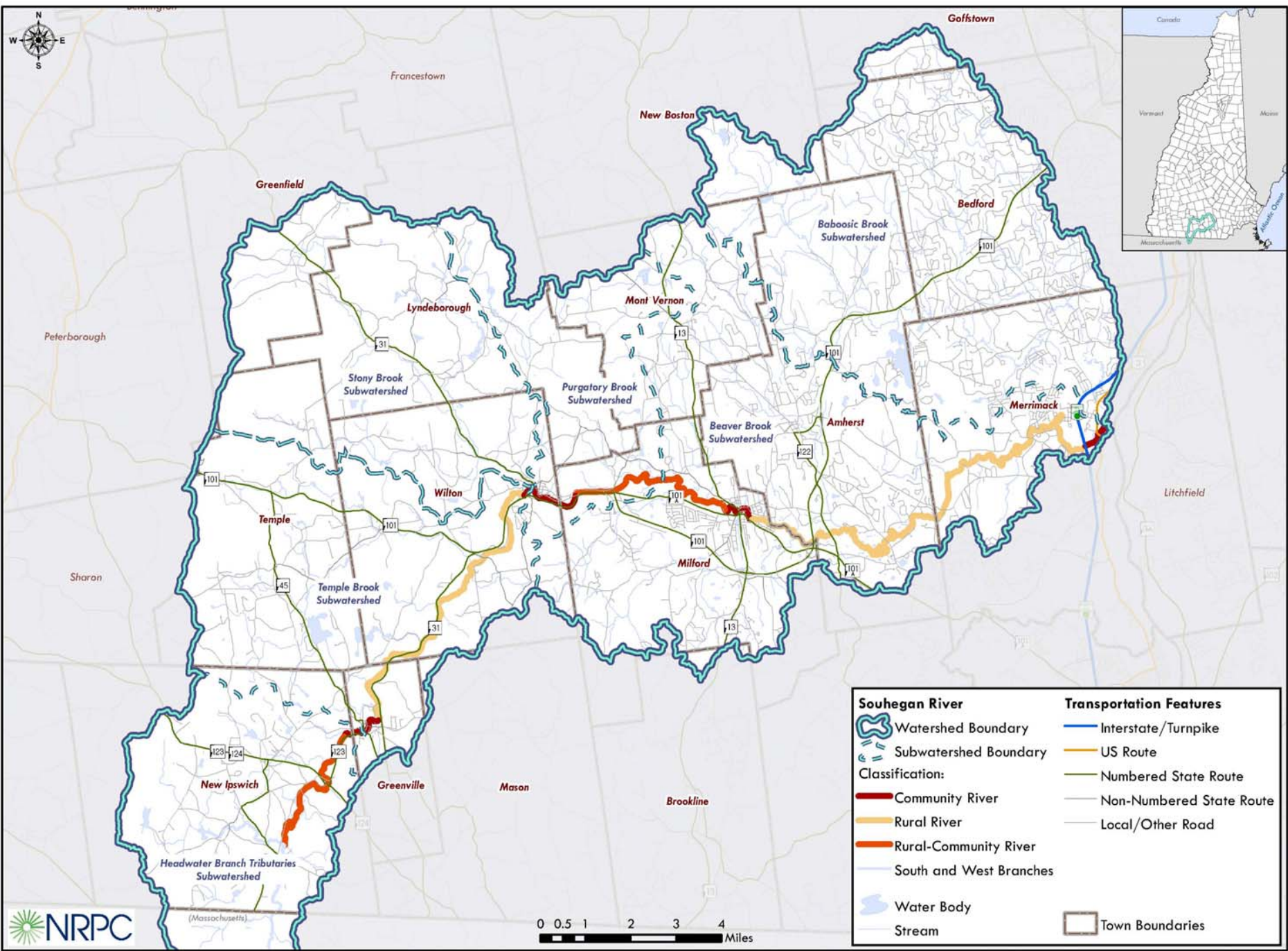
Presentation Overview

- Intro to the Souhegan River Watershed
- Overview of the SRWMP
- Incorporation into Community Master Plans
- Next Steps and Available Resources

The Souhegan River Watershed

- Designated River under the NH River Management and Protection Program (RSA 483)
- Members appointed to the Souhegan River Local Advisory Committee by nomination through local governing body and approval by NHDES Commissioner
- Membership represents a broad range of interests and all communities through which river flows

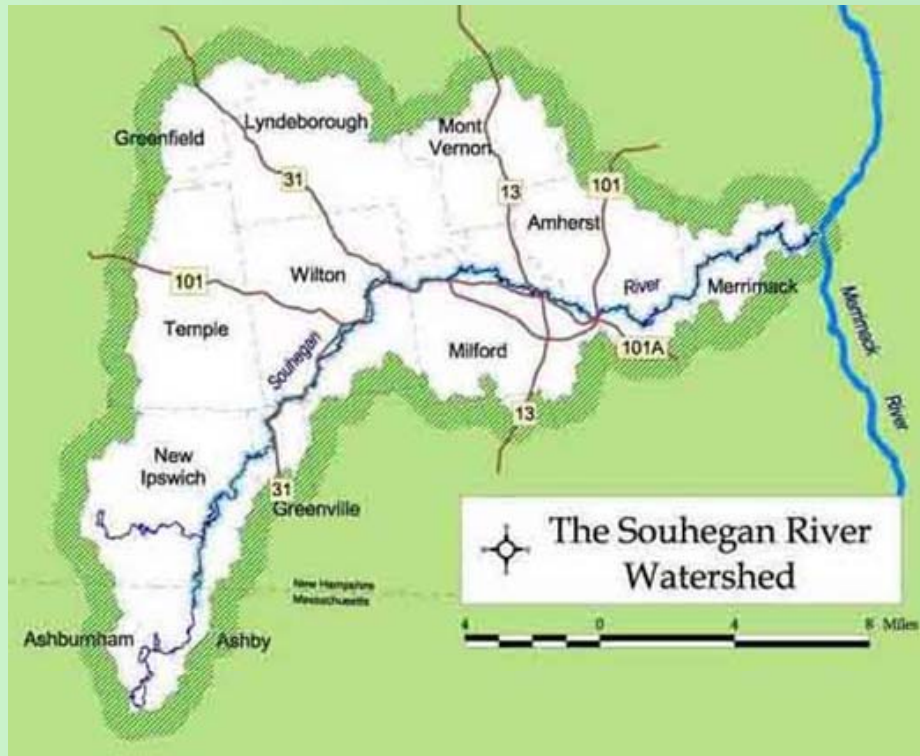




Souhegan River		Transportation Features	
	Watershed Boundary		Interstate/Turnpike
	Subwatershed Boundary		US Route
Classification:			
	Community River		Numbered State Route
	Rural River		Non-Numbered State Route
	Rural-Community River		Local/Other Road
	South and West Branches		
	Water Body		
	Stream		Town Boundaries



The Souhegan River Watershed



Major Watershed Communities

Amherst	Milford
Bedford	Mont Vernon
<i>Greenville</i>	New Ipswich
Lyndeborough	Temple
Merrimack	Temple

Minor Watershed Communities

Brookline	New Boston
Goffstown	Peterborough
Greenfield	Sharon
<i>Greenville</i>	Ashburnham, MA
Mason	Ashby, MA

The Souhegan River Watershed



- *Lots* of existing data
- *Lots* of threats
- *Lots* of stakeholders

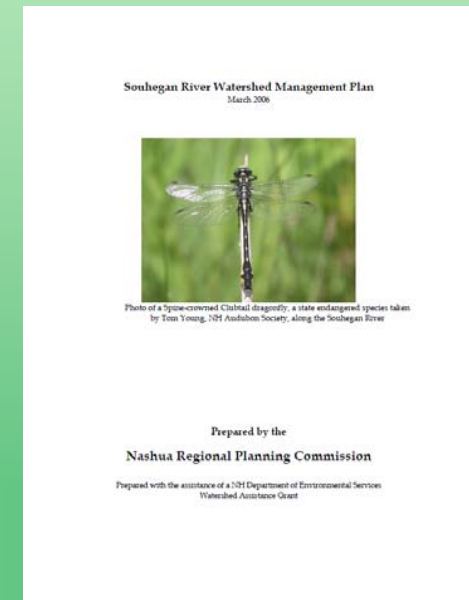


The Souhegan River Watershed

- 34 river miles from Ashburnham MA to the Merrimack River
- 220 square miles contained by the watershed
- 6 subwatershed areas
- 8,217 acres of wetlands in the watershed (NRPC 2006)
- 1,707 acres of lakes and ponds
- 14 major tributaries to the Souhegan
- 347 river miles of contributing streams
- 39 to 818 cfs flow range recorded at the USGS gauging station above Wildcat Falls in Merrimack
- 900-foot elevation change from New Ipswich to Merrimack
- 19 Rare, Threatened, or Endangered Species

Overview of the SRWMP

- Prepared by NRPC on behalf of SoRLAC in March 2006
- Specifies long-term use and protection strategies for the Souhegan River and its watershed





Overview of the SRWMP

Contents of the Plan

Chapter 1 – Executive Summary

Chapter 2 – Introduction

Chapter 3 – Watershed Conditions

Chapter 4 – Watershed Assessment

Chapter 5 – Watershed Protection Techniques Toolbox

Chapter 6 – Implementation Strategies

Chapter 7 – Measuring Results



Overview of the SRWMP

Contents of the Plan

Chapter 1 – Executive Summary

Chapter 2 – Introduction

Chapter 3 – Watershed Conditions

Chapter 4 – Watershed Assessment

Chapter 5 – Watershed Protection Techniques Toolbox

Chapter 6 – Implementation Strategies

Chapter 7 – Measuring Results



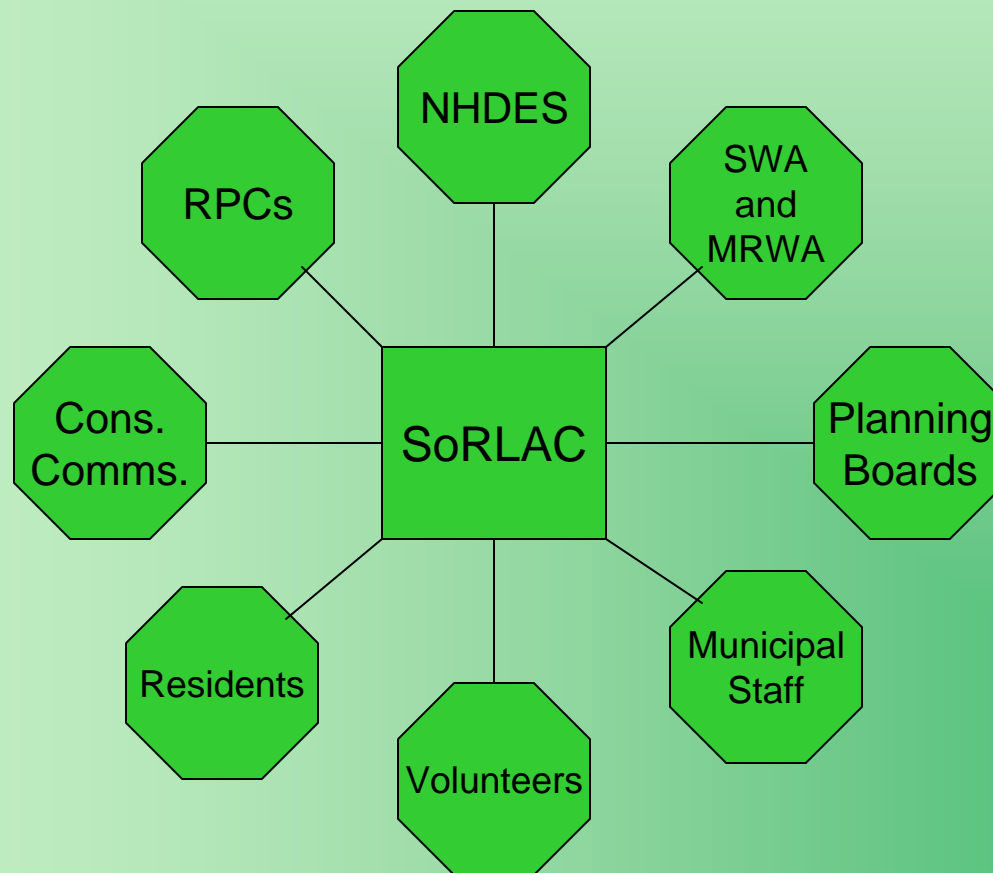
Overview of the SRWMP

Implementation Strategies

- 1) Watershed Planning
- 2) Land Conservation
- 3) Aquatic Buffers
- 4) Better Site Design
- 5) Erosion and Sediment Control
- 6) Stormwater Management
- 7) Non-stormwater Discharges
- 8) Watershed Stewardship Programs

Overview of the SRWMP

Watershed Management Partners





Overview of the SRWMP

Purpose of the Plan

- Develop strategies and goals that improve the watershed environment and river resource
- Manage resources at a watershed scale
- Improve understanding of the watershed and its processes
- Provide direction for stakeholder groups on issues and opportunities



Overview of the SRWMP

Priority Management Objectives

- Adopt a watershed management approach
- Encourage public access to the Souhegan River
- Encourage land conservation and open space in the watershed
- Prevent loss of wetlands
- Prevent development of floodplains
- Maintain and restore vegetated buffers
- Adopt site design practices that protect aquatic resources



Overview of the SRWMP

Priority Management Objectives (cont.)

- Prevent soil erosion and require use of BMPs
- Use water quality BMPs to mitigate impacts of stormwater
- Prevent non-stormwater discharges
- Promote watershed stewardship activities
- Continue and expand water quality monitoring efforts



Incorporation Process

- Allow communities to become familiar with the plan through public presentations and discussions with SoRLAC and NRPC
 - Copies of the SRWMP
 - Watershed Maps
 - Community Watershed Brochures
 - Web-based Resources (www.srwa.org and www.nashuarpc.org/SRLAC)
 - Follow-up Presentations
- Identify areas where Master Plan goals coincide with SRWMP objectives as well as new objectives or strategies

Next Steps and Resources

- 1) Form a local subcommittee
- 2) Review the SRWMP in detail
- 3) Ask questions about the Plan
 - Souhegan River Local Advisory Committee
 - Souhegan River Watershed Association
 - Nashua Regional Planning Commission
 - NH Department of Environmental Services
- 4) Hold informational meetings as needed
- 5) Discuss findings from each step with municipal officials
- 6) Adopt the Plan (RSA 675:6)!



Next Steps and Resources

Souhegan River Local Advisory Committee and Souhegan River Watershed Association

George May, Chair

georgemay@comcast.net

Nashua Regional Planning Commission

Minda Shaheen, Environmental Planner

mindas@nashuarpc.org

NH Department of Environmental Services

Laura Weit-Marcum,

Acting Rivers Coordinator

laura.weit-marcum@des.nh.gov

